

Birmingham Botanical Gardens

Centennial Tree Program

June 20 2017



BIRMINGHAM BOTANICAL GARDENS

www.bbgardens.org

Centennial Tree Program In a Nutshell

9 Year Old Program

2-Year Old Seedlings

Natural and Cultural Landscapes

Where Natural Regeneration is Lacking

Ownership by Community Partners

Centennial Tree Program

In a Nutshell

Native Trees

Remnants of the Original Forest

Often not Commercially Available

Local Provenance is Key

Species

Size / Age

(Age Predates Birmingham, 130 Years)

Landscape Position



Birmingham's Ancient Deciduous Forest

Most Recently Ten-thousand Years Old
One of the most Biodiverse Ecosystems
in the Nation

Intersection of Appalachians, Coastal
Plain and Cumberland Plateau

Biodiversity Extends into the Urban
Environment







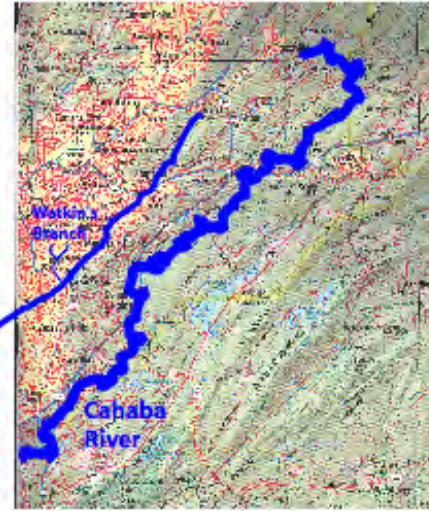
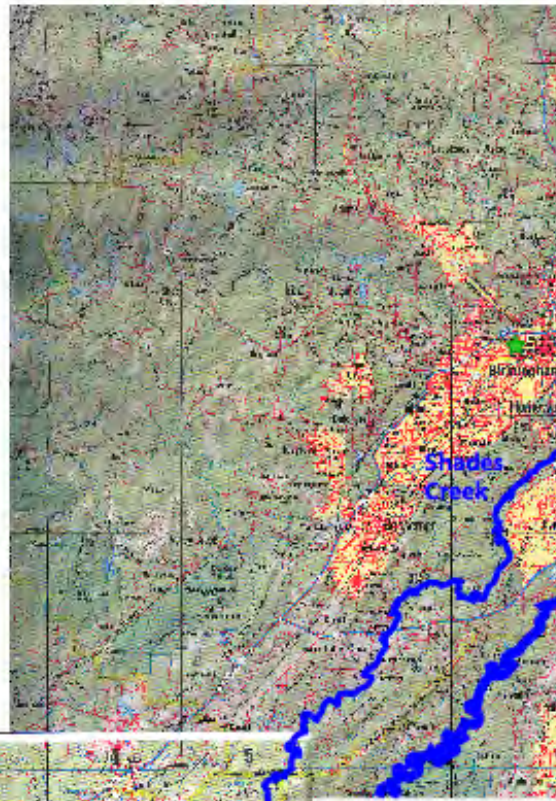


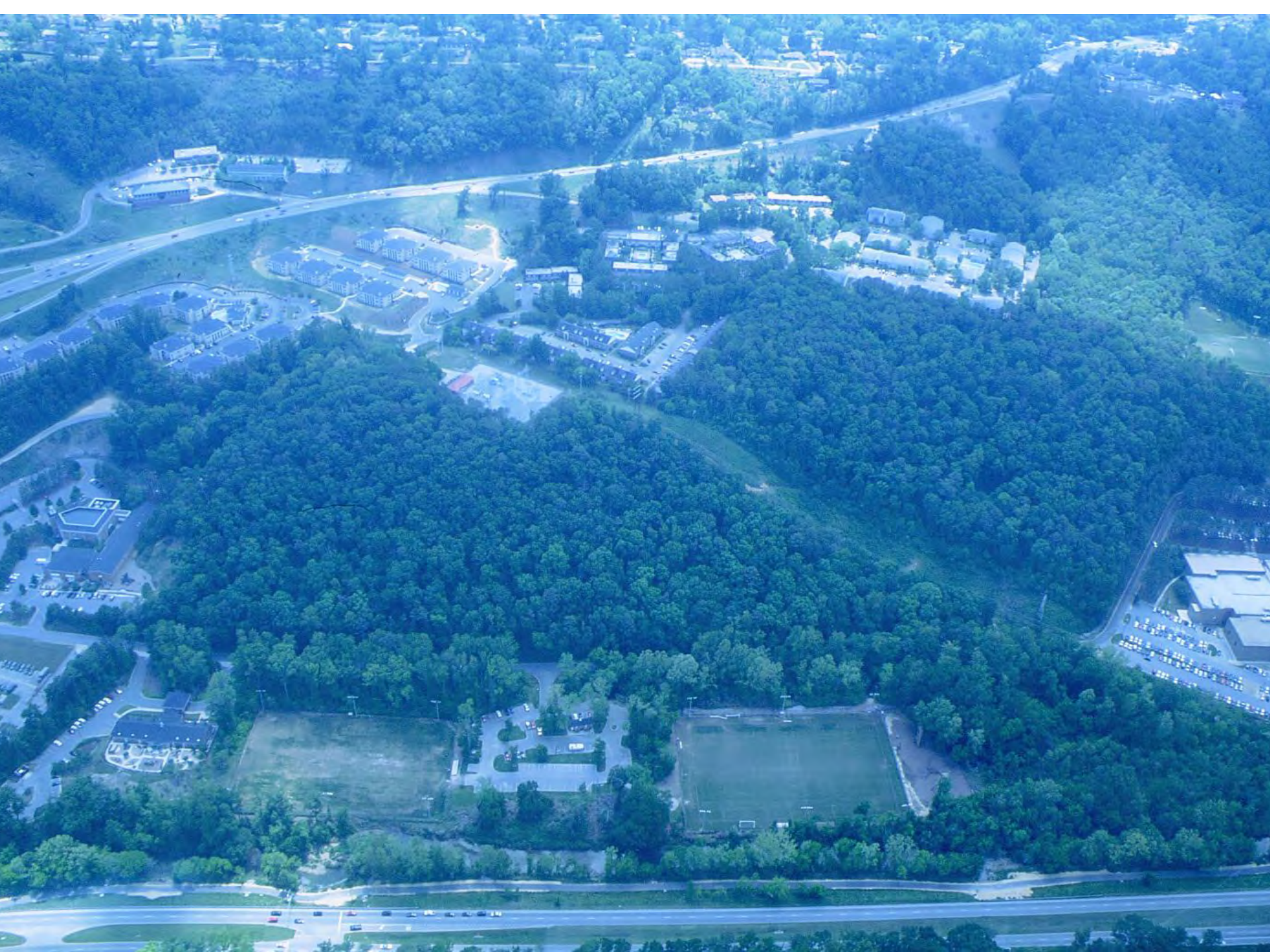


Birmingham's Remnant Forests and Urban Trees

Self-sustaining forests follow mountains
running SW to NE

Fragmented forests and isolated native
trees provide a context to the built
environment

























Centennial Tree Project

Garden Club of America

2009-2013







NO SMOKING
IN THIS AREA

ICE

EXIT









Centennial Tree Program

Birmingham Botanical Gardens
2014 – 2017 Forward

Community Tree Loss

99 Neighborhoods in the
Birmingham Metro Area





Not a Tree Planting Program

Only 1000 Seedlings a Year

Local Provenance is the Central Idea

Educational Program about Planting

Locally-Sourced Native Trees
Community Volunteer Engagement
Partnership Development



Success is Measured

By the Level of Community Involvement

Adopting The Gardens' Methodologies:

City of Mountain Brook

University of Alabama at Birmingham

Local Branding:

“Freedom Trees”

“Green Skies over Homewood”









Homewood's Native Tree Planting Initiative

Find us on Facebook
Homewood Environmental Commission

Homewood Environmental Commission



Partners in Preserving Homewood's Native Tree Canopy:

- Birmingham Botanical Garden
- Samford University
- Friend's of Shades Creek
- Simi's Garden
- The Boy Scouts
- Homewood High School Biology Class
- Homewood Parks and Recreation and Public Works
- Alabama Power
- Daniel Corporation and Landscape Workshop
- Homewood Star
- Hunter's Tree Nursery

Homewood Environmental Commission's Native Tree List:

Shade Trees:

- Acer saccharum Sugar Maple 50' ht.
- Liriodendron tulipifera - Tulip Poplar 80' ht.
- Nyssa sylvatica - Black Gum 60-70' ht.
- Platanus occidentalis - Sycamore 70-90' ht.
- Quercus alba - White Oak 70-90' ht.
- Quercus lyrata - Overcup Oak 40-50' ht.
- Quercus macrocarpa - Bur Oak 70-90' ht.
- Quercus nuttalli - Nuttall Oak 70-80' ht.
- Quercus phellos - Willow Oak 70-80' ht.
- Quercus sumatre - Shumard Oak 70-80' ht.
- Taxodium distichum - Bald Cypress 50-100' ht.

Small Understory Trees - Good for under power lines, be mindful of site distance:

- Amelanchier x grandiflora - Serviceberry 20' ht.
- Betula nigra - River Birch 35' ht.
- Carpinus c. - American Hornbeam 20-30' ht.
- Cercis canadensis - Eastern Redbud 20' ht.
- Cornus florida - Dogwood - 20' ht.
- Crataegus v. - Winter King Hawthorn - 20' ht.
- Magnolia v. - Sweet Bay Magnolia - 40' ht.

-All seedlings grown from local trees by the Birmingham Botanical Gardens



OPEN

CLOSED

Hefty

**STRONGER
—SEAL—**

11/3/16
124 Stratford Circle
35209

White Oak (I think)
there was also a water oak
nearby, and a willow oak.
Lucky neighbor! 3 hearts.

Tish Patton 253-4694

Red Mt.





Look up!

Homewood is losing its tree canopy. Our long-time residents can remember when our streets were lined with large shade trees. But because of weather damage, poor building practices, and just old age, we have lost xx% of our old growth trees. Construction and drought are stressing our remaining large trees, and they won't be around forever.

Our children and future citizens deserve Homewood neighborhoods as beautiful and gracious as they once were!

The City of Homewood has a new tree planting initiative dedicated to replacing native trees in public spaces, but we can all help.

If you are lucky enough to have a home or business with space for a significant tree, please consider planting one of the varieties native to Homewood, or another species tolerant of drought and urban limitations.

Good native varieties for Homewood are: xxxxxxxx

Other good urban trees for our region are: xxxxxx

Brought to you by the
HHS Environmental Club and private donations



"Someone's sitting
in the shade today because
someone planted a tree
a long time ago."

Walter Dwyer

"Even if I knew that tomorrow
the world would go to pieces, I
would still plant my apple tree."

Martin Luther

"Tree planting is always a
utopian enterprise, it seems
to me, a wager on a future the
planter doesn't necessarily
expect to witness"

Marshall McLuhan

- 1 Good advice on urban trees can be found at www.hhsconnect.com.
- 2 Remember to consider power lines and other utilities when planting.
- 3 Fall and winter are the best times to plant, allowing trees to become established before the heat of an Alabama summer.
- 4 Don't compact the roots of established trees by parking vehicles/dumpsters/construction materials underneath. Although the damage may not show up for a couple of years, it can kill them.
- 5 Trees increase property values, decrease utility bills, provide a home for wildlife and clean the air—all while looking beautiful!



Raison d' Etre is Educational

Aesthetic

Cultural

Ecological

Economic















Seed Collection and Storage

Fall and Spring Germinating Species











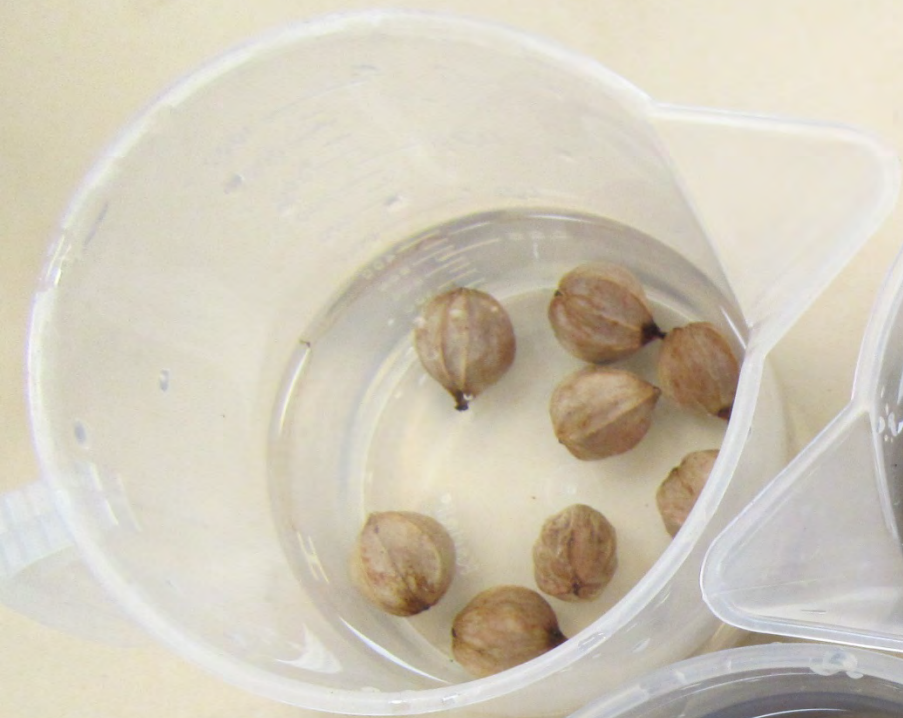
















Seed Germination and Planting

Playing a Horticultural Trick on Nature









Keep These
Cabinets
Locked.

This bag holds 50 lbs
and the weight limit
is 100 lbs.

4-11

100 lbs

100 lbs

100 lbs

100 lbs































Planting Projects

Multi-Year Community Partnerships

George Ward Park

Local Chapters of Garden Club of
America

Friends of Glen Iris Neighborhood
Friends of George Ward Park

A PARK SYSTEM FOR
BIRMINGHAM

OLMSTED BROTHERS

EXISTING PARK AREAS MARKED BY NUMBERS

1. AVONDALE PARK
2. BEHRENS PARK (JORDAN)
3. CALDWELL PARK
4. CENTRAL PARK
5. EAST PARK
6. EAST LAKE PARK
7. ELYTON PARK
8. ENSLEY PARK
9. FAIRVIEW PARK
10. FOUNTAIN HEIGHTS PARK
11. GREEN SPRINGS PARK
12. HARRISON PARK
13. LYNN PARK
14. MAGNOLIA PARK
15. MC LONDON PARK
16. MINERAL SPRINGS PARK
17. NORTH BIRMINGHAM PARK
18. NORTH HAVEN PARK
19. NORWOOD BOULEVARD
20. PHELAN PARK
21. RED MOUNTAIN PARK
22. RHODES PARK
23. RUSHTON PARK
24. SHADY SIDE PARK
25. UNDERWOOD PARK
26. VILLAGE CREEK PROPERTY
27. WEST PARK (INGRAM)
28. WOODROW WILSON PARK (CAPITOL)
29. WOODLAWN PARK
30. WOODWARD PARK

PROPOSED PARK AREAS MARKED BY LETTERS



PARK AND RECREATION BOARD
BIRMINGHAM-ALABAMA
OUTLINE MAP SHOWING
PRESENT AND PROPOSED PARK AREAS
WITHIN THE CITY

SCALE OF MILES

OLMSTED BROTHERS
BROOKLINE, MASS.

LANDSCAPE ARCHITECTS
SEPTEMBER, 1924

KEY
EXISTING PARKS SHOWN THIS
PROPOSED PARKS SHOWN THIS



























GEORGE WARD PARK REFORESTATION PROJECT

BIRMINGHAM BOTANICAL GARDENS • LITTLE GARDEN CLUB • RED MOUNTAIN GARDEN CLUB
CITY OF BIRMINGHAM • GLEN IRIS NEIGHBORHOOD ASSOCIATION • FRIENDS OF GEORGE WARD PARK



The Problem: Since the creation of George Ward Park in 1925, not a single native seedling has germinated and grown beneath the parent trees due to poor soil conditions and soil erosion.

The Process: The older, larger species of trees in George Ward Park—blackjack oak, post oak, red hickory, etc.—must be regenerated from seed and planted. Seeds have been taken directly from the older park trees, germinated, and grown into seedlings for planting.

Tree Planting Sat, Oct 24; 8AM

(Back-up dates: October 31, 8AM; November 7, 8AM)

**THROW YOUR
BRUSH CLIPPINGS
HERE NOW!**

By collecting clippings and brush from the surrounding neighborhood and scattering it throughout the park, we hope to slowly regenerate the soil's organic nutrients as they deteriorate.

The Objective: With the completion of this project and better wildlife area preservation efforts, it is our hope that, after five years, sufficient organic matter will have accumulated beneath the old trees to allow their seed to germinate naturally, thus initiating self-regeneration of the forest.















GEORGE WARD PARK
REFORESTATION PROJECT
NATURAL WILDLIFE AREA
**DO NOT MOW
OR RAKE**
Signage provided by Friends of George Ward Park • www.friendsofgeorgewardpark.org





George Ward Park

Over 5 years, 1000 seedlings planted.
The first native trees grown from the
original forest trees in the park
since 1927













Other Historic Parks

Avondale Park

Vulcan Park

Red Mountain Park

Patriot Park





















Village Creek

Village Creek Human and
Environmental Justice Society
South Pratt Neighborhood





OS 05/07







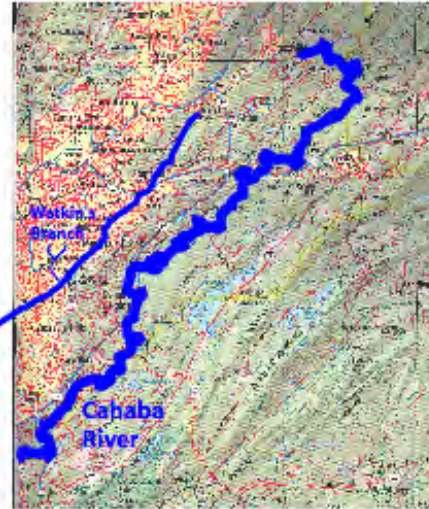
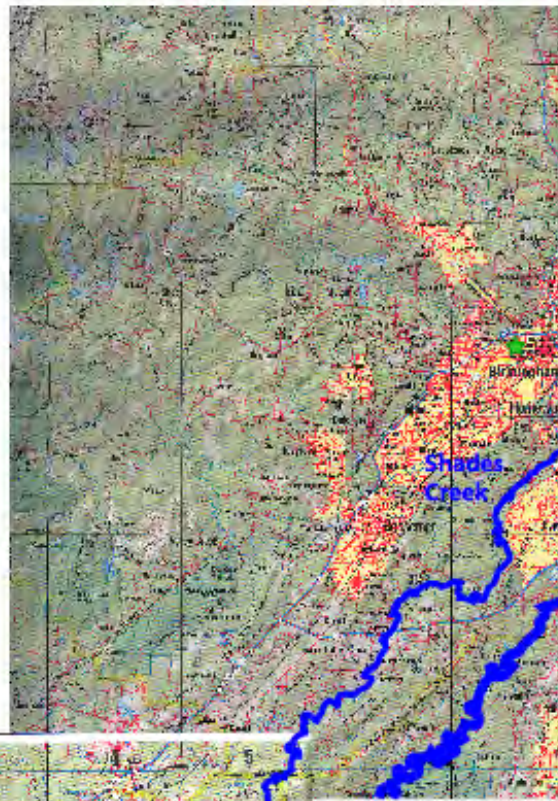






Shades Creek

Homewood Environmental Commission
Friends of Shades Creek



































Cahaba River Upper Watershed

Cahaba River Society

Trussville Springs New Urbanism
Community











Cahaba River Lower Watershed

Cahaba River Society

Friends of the Cahaba River National
Wildlife Refuge





































Abandoned Strip Mines

Cahaba National Wildlife Refuge



















Prairie Restoration

Birmingham Audubon Society

City of Alabaster









Storm Damaged Areas

Huntsville, Alabama is Tornado Alley!

Pratt City

North Smithfield Community

























A New Generation

High School and College Interns







