

Fusing Seasonal Display Planning with Garden-wide Approaches and Programming

Tim Pollak

Outdoor Floriculturist

Chicago Botanic Garden





Chicago Botanic Garden:
385 acres, 27 Display Gardens, and 4 natural areas

History

- The Chicago Botanic Garden traces its origins back to the Chicago Horticultural Society, founded in 1890. Using the motto *Urbs in Horto*, meaning "city in a garden,"
- In 1962, its modern history began when the Society agreed to help create and manage a new public garden. With the groundbreaking for the Chicago Botanic Garden in 1965 and its opening in 1972, the Society created a permanent site on which to carry out its mission.
- The Garden today is an example of a successful public-private partnership. It is owned by the Forest Preserve District of Cook County and operated by the Chicago Horticultural Society.

Our Mission

We cultivate the power of plants to sustain and enrich life.







Designing a large and institution-wide Thematic Display

Using a Garden-wide

Holistic Approach...

**Intersection of multiple
departments**

Steps to Planning a Large Thematic Display

- Create the idea and concept
- Develop the team, and team “charter”
- Brainstorming
- Develop the “Creative Brief”
- Create the Project Plans for each department the Theme

Develop the “Creative Brief”

- Purpose. **Ask the Why?** Very important from the beginning
- Objective. What does the theme want to achieve?
- Elements involved? The talking points and supportive information
- Target Audience? Who are you trying to reach?
- Attitude and Tone?
- Tagline(s) and Keywords

How do you determine when to Theme?

- Cycle that allows you to learn between cycles
 - 2 year cycle?
- Allows for proper planning, need 24-36 months ahead of time to properly prepare all departments involved
- Create a multiple-year Theme schedule for 3 to 10+ years into future
- Need to allow staff the time to do the day to day work as well as prepare for the garden-wide themed program
- Visibility and research into what other institutions or cities are doing at the same time

Objective: To explore some of the strategic questions of the Thematic Template

What is the purpose of at large Garden-wide (or smaller) Theme?

- Powerful way of delivering the value of each part of the Garden
- Engages every part of the Garden in a unified or integrated way to deliver content
- Strengthens your internal work through collaboration
- Ensures that everyone knows what's going on and end up with a much better solution because the choices are vetted – a lot of people and functions involved in evaluating from a lot of different perspectives and earlier involvement by various functions including communication
- Touches the mission of the Garden
- Has a positive impact on the institution or topic that we profile
- Learning new things all the time is a powerful vehicle for developing staff; it's an employee and visitor *value proposition*

What is the Value Proposition?

- Novel and new, builds interest
- Engages new audiences
- Immersion provides a lot of opportunity to communicate
- Potentially younger and more diverse audiences
- Creates a buzz—the buzz feeds the interest (word of mouth marketing)
- Helps identify a new and unique focus to help connect with guests and funders
- Is educational by definition
- Attracts repeat visitors
- Opportunity to partner with other institutions around a topic of interest or service to the city

Project Planning by Department

[illegible]

What are the potential pitfalls or risks of using a Theme?

- Visitors don't like the theme, so don't come
- Some areas of the Garden will not have an obvious connection, so it forces each group to stretch or reach to find things that fit into the theme
- Adds a whole layer of work, if it's not planned properly
- Authenticity is critical, if not, it can be perceived negatively

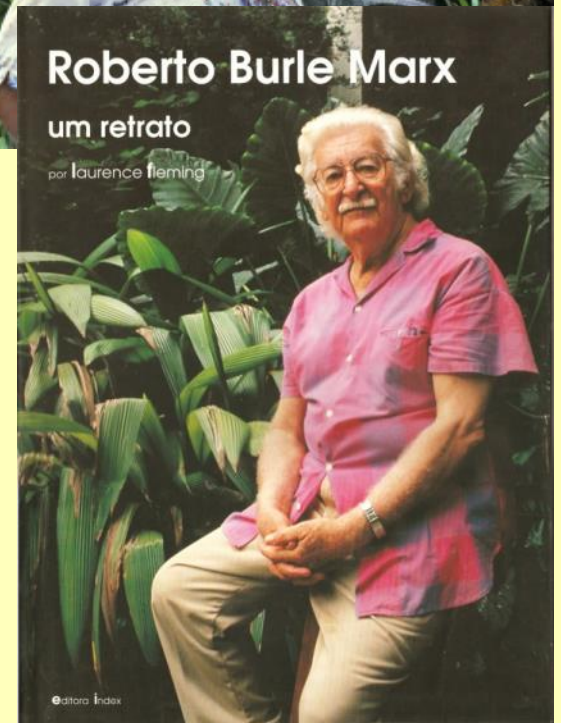
Production and Plant Purchasing:

- Develop plant lists early as possible
- Purchase and grow large specimens ahead of time to fulfil certain specs
- Work with each Horticulturist to review designs and determine plant qty's and sizes
- Create a "SPEC" list to help fill-in and ensure you have enough to maximize the displays
- Use sources and brokers you can trust, good communication along the process is a must
- Very important! Visit sources and nurseries ahead of time to tag, *1 year in advance, and *1-2 months before to review quality, make subs as needed prior to shipping
- Shipping issues are unfortunately inevitable....

It started with an idea and
inspiration...
19 months ago



Roberto Burle Marx, 1909-1994



ROBERTO BURLE MARX DESIGNS & INSPIRATIONS



FAZENDA VARGEM GRANDE ↑
1973

THE GARDEN WAS A FORMER COFFEE
BEAN FARM, A HUB OF FINANCIAL
INCOME FOR BRAZIL



↑ MINISTRY OF EDUCATION & HEALTH, RIO DE JANEIRO
1938

BURLE MARX'S ORIGINAL PAINTING OF THE INITIAL DESIGN
OF THE PLAN FOR THE ROOF GARDEN OF THE MINISTRY OF
EDUCATION & HEALTH

BRAZILIAN FOLK ART ↓



COPACABANA BEACH
1970

AN ABSTRACT DESIGN OF RED, BLACK, WHITE MOSAIC



THE STRUNK GARDEN ↑
1954

BURLE MARX WAS NOTED FOR HIS VAST USE OF
NATIVE BRAZILIAN PLANTS IN THIS GARDEN.



Roberto Burle Marx Art and Designs



2017 BRAZIL IN THE GARDEN TEAM THEMATIC PLAN

Team Name: Brazil in the Garden (BIG)

Project Description: Team Thematic Plan

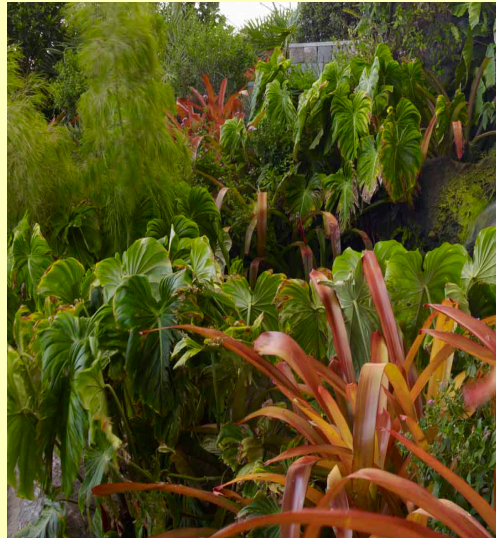
Team Lead: Andrew Bunting

Phase	Action	Responsibility	Start Date	End Date	Completion Date	Notes
1.0	Create a Strategy Document for Brazil in the Garden	JZ	7/1/2016	7/31/2016		
1.1	Present Brazil in the Garden Timeline to Stakeholders - Senior Staff	JZ	8/1/2016	8/1/2016		
1.2	Establish Team Charter	Team/ AB	11/19/2016	11/24/2016		
1.3	Present Team Charter and 'Brazil in the Garden' plan to Senior Staff	AB	11/28/2016	12/5/2017		
2.0	Identify subcommittees, chairs and assignments:	AB	11/28/2016	12/6/2016		
3.0	Develop a Creative Brief with outside consultant	Team/AB/WG	11/28/2016	1/3/2017		
3.1	Present and Approval of Creative Brief	AB/Senior	11/28/2016	1/8/2017		
4.0	Horticulture Plan	TP	12/7/2016			Goal by 1/12/17
4.1	Education Plan	KJ	12/7/2016	12/14/2016		Goal by 1/12/17
4.2	Science and Conservation Plan	PH	12/7/2016	1/4/2017		Goal by 1/12/17
4.3	Public Programming Plan	JZ	12/7/2016	1/3/2017		Goal by 1/12/17
4.4	Marketing Plan	WG	12/7/2016	1/5/2017		Goal by 1/12/17
4.5	Development Plan	RR	12/7/2016	12/28/2016		Goal by 1/12/17
5.0	Update Senior Staff	AB/ JZ	2/6/2017			
6.0	Present future thematic ideas to Senior Staff	AB/JZ	2/6/2017			
7.0	Finalize thematic template and present to Senior Staff	AB/JZ	4/1/2017			
8.0	Finalize content of all Project Plans	Team	4/1/2017			
9.0	Install 'Brazil in the Garden'	Team	6/1/2017			



A Season of Programming

- Bold, Vibrant and Biodiverse
 - Celebrate the influence of Brazil on gardens, arts and culture, and conservation.



BRAZIL IN THE GARDEN

Benefits

- New PR angle for the Garden,
- Great way to fuse Horticulture, Science, Education, Visitor Services, Development, Volunteers, and other departments
- Answers the question of 'what's new at the Garden?'
- Potential to bring in new and/or diverse audiences
- Link to a community the Garden has not worked with before

Risks

- Plant cultural issues
- Authenticity of content
- 'I miss my regular Garden'
- 'Where are all the mums?'
- 'Why would you mess with something that already works?'
- 'Summer sells itself already'

BRAZIL IN THE GARDEN

Components of the Theme:

- Horticulture Displays
- Public Programming
 - Visitor Events & Programs
 - Summer Evenings
 - Chef Series
 - Trams
 - Joutas Temporary Exhibition
 - Interpretive Signage
 - Garden View Café and Garden Shop
 - Education
 - Classes and Activities
 - Lenhardt Library
 - Science and Conservation
- Development
 - Sponsorship
 - Government Relations
 - Large fundraising event
- Communications/PR



BRAZIL IN THE GARDEN

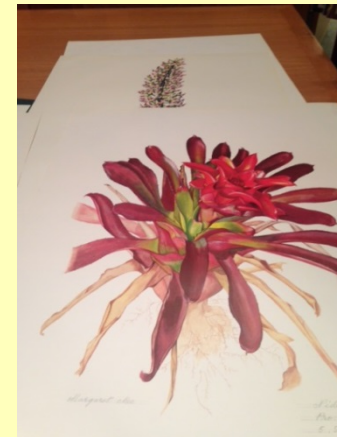
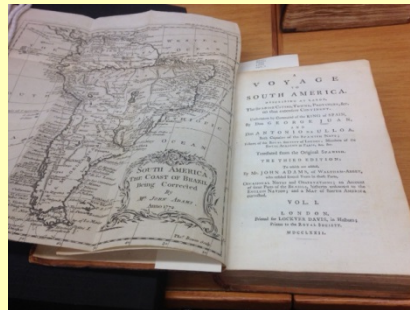
Public Programs: Interpretive/Café/Shop

- Interpretive Signage
 - ‘Chalkboard signs’ in each display garden area
 - Fun facts and messaging about science and conservation (Brazil is considered to have the greatest biodiversity of any country on the planet)
 - Greenhouses will highlight plants to discuss diversity and conservation – i.e. *Pereskia* (cactus) and *Theobroma cacao* (cacao beans)
- Garden View Café
 - The Café will plan Brazilian themed food and drink at appropriate times (Brazilian music evenings, Brazilian Chef Series days, etc.)
- Garden Shop
 - Brazilian inspired wares will be for sale in the Shop
 - The Shop will sell totes, mugs and such (like Orchid) with images from our rare books collection

BRAZIL IN THE GARDEN

Public Programs: Lenhardt Library

- ***Flora Brasil*** exhibition text will describe attributes of tropical Brazilian flora and Brazilian biodiversity, and the significance of the specific volumes in the cases.
- Margaret Mee and her work will be featured as a botanical artist who painted native plants of the Amazon rain forest, as an early environmentalist for Brazil, and her influence on Roberto Burle Marx.



BRAZIL IN THE GARDEN

Education:

- Programs for families with children (June – August)
 - Summer Garden Bingos
 - Family Drop-In Activities – one station (TBD)
 - Feature tropical plants/design elements found in display gardens
 - Nature Nights: Lush Landscapes of Brazil – painting
 - Ages 4-10
 - Family Campouts: Brazil in the Garden – art project
 - Ages 5 and up
 - Programs for Preschool age children
 - Nature Preschool will visit display gardens in early fall and investigate tropical plants up close in the classroom
- Camp CBG
- Tropical plants will be highlighted in various camp sessions



BRAZIL IN THE GARDEN

Public Programs: **Roberto Burle Marx** Art Exhibition in Joutras Gallery

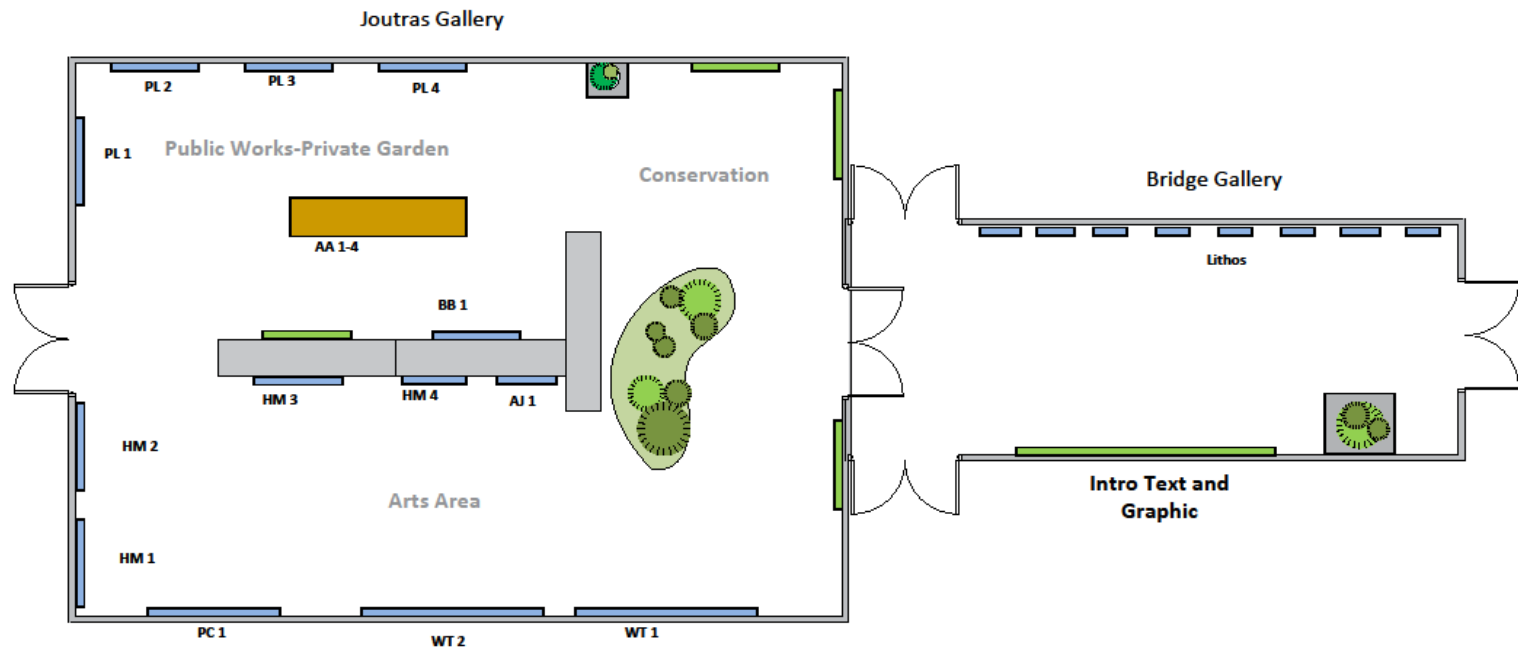
- May 26 – Sept. 10
- Message how Brazil is considered to have the greatest biodiversity of any country on the planet
- Showcasing/messaging Marx's conservation efforts and influential style of garden design – includes original pieces of his artwork

CHICAGO BOTANIC GARDEN

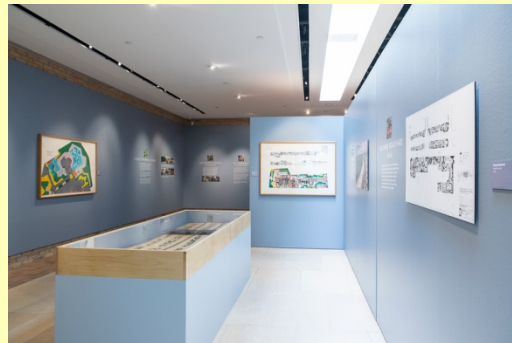
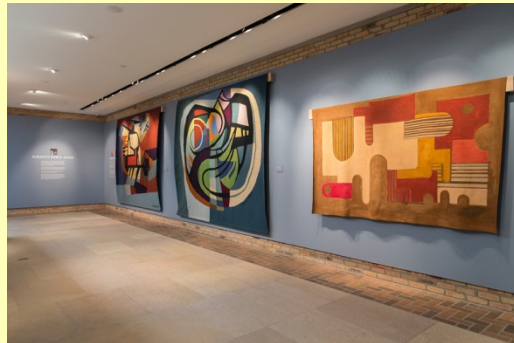


RBM Exhibit

Overall plan view



- Roberto Burle Marx Art
- Interpretive Panels
- Display Case
- Gallery Walls



BRAZIL IN THE GARDEN

Horticulture: Plant Displays

- Lake-Cook Main Entrance
- Gatehouse
- Visitor Center – plaza, entrance and vertical planters
- Garden Café – entrance bed and tables
- Visitor Center Bridge Hayrack baskets
- Crescent Garden
- Heritage Garden
- Circle Garden
- Fruit & Vegetable Garden – selected plantings
- Grunsfeld Children's Garden – bed plantings and containers
- Buehler Enabling Garden – vertical wall plantings
- Regenstein Center North Stairs containers
- Esplanade – fall containers (instead of Mums)
- Krehbiel Gallery Pool
- Greenhouses – Palm Allee and large hanging vertical element
- Greenhouse Gallery – corner displays and containers
- Science Center – entrance containers



2017 BRAZIL IN THE GARDEN - HORTICULTURE THEMATIC PLAN

Project Lead: Tim Pollak

Step	Action	Responsibility	Start	Finish	% Work Complete	Notes/ Issues	June 11 6/10	6/17	6/24	July 1 7/1	7/8
L.0	Brainstorming Phase				100%						
L.1	Plan trip to Florida to look at plants for future displays, and make new contacts for sourcing plants	AB,TP	Mon 10/5/15	Sun 11/29/15	100%	11/29/15-12/4/15					
L.2	Brainstorm of initial idea and theme- Roberto Burle Marx inspired displays ("Brazil In Chicago")	AB,TP	Sun 11/1/15	Fri 1/22/16	100%	The more time the better to fully plan and organize for multi-departmental planning and budgetary processes					
L.3	Present display idea to Sr. Hort staff for support and approval (initially Kris Jarantoski and Tim Johnson)	AB,TP	Fri 1/22/16	Fri 1/22/16	100%	Received support and go-ahead to proceed with proposed designs and displays					
L.4	Present idea to Sr. Staff (Jodi Zombolo, Harriet Resnick, KJ, TJ) for additional approval, feedback and Q&A	AB,TP	Mon 2/22/16	Mon 2/22/16	100%	Pitched Brazil and other future Wow ideas and themes					
L.5	Present Brazil to selected key CBG staff (Sr. Staff, Education, Visitor Op., Hort, Corp. sponsor, Gov Affairs, Communication & Marketing)	AB,TP	Mon 2/29/16	Mon 2/29/16	100%	Presented theme to multi-departmental audiences for discussion and Q&A					
L.0	Design Phase				100%						
L.1	Schedule weekly meetings as needed to begin designs, layouts, and details for each Garden area involved	AB,TP	Fri 1/1/16	Sun 5/1/16	100%	Meet 1-2x/week as needed to go thru each Garden area based on theme and details involved. Plant list first, then design layout					
L.2	Meet to review planting areas with Horticulture Staff, Q&A, feedback, and update progress	AB,TP,Hort Staff	Mon 3/14/16	Mon 3/14/16	100%						
L.3	Create Master Plant List for all plants, and Fall Change-out Master list of all plants needed, determine sources, and plant sizes	TP	Fri 1/1/16	Sun 5/1/16	100%						
L.4	Meet to review Brazil exhibits with CBG Education Staff	AB,TP	Thu 3/17/16	Thu 3/17/16	100%	Educational ideas and programming discussed					
L.5	Meet to follow-up with Sr.Staff and key Brazil display areas (Library, Indoor display) with Leora S., Brian B., Jodi Z., Harriet R.	AB,TP	Wed 5/4/16	Wed 5/4/16	100%	Brazil displays and ideas for public programming discussed					
L.6	Meet to discuss indoor display area featuring Brazil with Brian Barker	AB,TP,BB	Fri 3/25/16	Fri 3/25/16	100%	Brazil display possibilities for both indoor and outdoor areas, and enhancements					
L.7	Meet and review planting areas with entire Horticulture Staff, Q&A, feedback, and update	AB,TP,Hort Staff	Thu 5/12/16	Thu 6/30/16	100%						
L.8	Meet with each individual Horticulturist to review their Garden area designs, Q&A, feedback	AB,TP and Horticulturists	Thu 5/19/16	Thu 6/30/16	100%	Go over each individual design and plant list for each Garden area					
L.9	Meet to review indoor/specialty Brazil displays & designs with Brian Barker	AB,TP,BB	Wed 6/22/16	Wed 6/22/16	100%						
L.10	Meet with individual Horticulturists to finalize plant quantities and sizes	TP,Horticulturist	Fri 7/1/16	Fri 7/15/16	100%						
L.11	Review all Summer 2017/Brazil designs for display Gardens w/ Annuals review committee	Annuals Review committee	Wed 7/27/16	Tue 8/2/16	100%	2 review meetings for Annuals summer 2017					

Brazil in the Garden 2017 Master Plant Qty Size-Garden Displays-

as of 3/24/17

Name	Location	Sub Location	Qty	Need	Size	Source	Notes:
Aechemea 'Hacienda' (or'Raspberry')	North Stairs	Containers	12	9"	Bullis	might need sub?	
Aechmea blanchetiana	Lake Cook		18	10"	Bullis		
Aechmea blanchetiana 'Hawaii'	Visitor's Center	Ent & Plaza	36	10"	Bullis		
Aechmea blanchetiana	Gatehouse		26	10"	Bullis	(18) 14", (14) 10"	
Aechmea 'Blue Tango'	Crescent Garden		48	10"	Bullis	36" X 36"	
Aechmea 'Dean'	Circle Garden	Quads	12	10"	Bullis	4 x 3=12	
Aechmea 'Pinot Noir'	Crescent Garden		32	9"	Bullis		
Aechmea tayoensis	Circle Garden	Under Cornus mas	30	6"	Bullis	15 per side w/ Plectranthus	
Aechmea 'Yellow Berries'	Circle Garden	Boxwoods	24	9"	Bullis	5 or 6 per area	
Aechmea 'Yellow Berries'	Heritage Columns-Firepits		27	9'	Bullis	9 x 3 w/ Sedum Red Dragon's Blood	
Alcantarea imperialis 'Malbec'	Circle Garden	Fountain	12	3gal	Bullis	20" tall (from Excelsa?)	
Alcantarea imperialis 'Malbec'	Gatehouse		20	3gal	Bullis	2.5-3 ft tall	
Alcantarea odorata	Visitor's Center	Ent	12	3gal	Bullis	6 per side	
Alocasia macrorrhiza	Grunsfeld	Wind Bed	6	7gal	EXC		
Alocasia 'Morocco'	Circle Garden	East perimeter	18	2gal	CBG	CBG overwintered from EXC '16	
Alocasia plumbaea 'Serendipity' (or Megaladon or Metallica)	Gatehouse		32	7gal	EXC	bigger is better 5-6 ft	
Alocasia plumbaea 'Nigra'	Lake Cook		9	7gal	EXC	3gal= 9.50, Doug Ingram	
Alocasia portodora	North Stairs	Containers	2	15gal	EXC	5-6 ft tall	
Aloe 'Hedge Hog'	Circle Garden	Boxwoods	200	1gal	EXC	100 each side/50 per zone	
Alpinia 'Marble'	Circle Garden	Box Border	24	3gal	DIN	6 per area	
Anthurium superbum	Visitor's Center-containers	Entrance	6	7gal	EXC	Silver Krome	
Aphelandra hartwegiana	Circle Garden	Fountain	14	3gal	DIN	7 each side/indent, Doug Ingram	
Aphelandra hartwegiana	Crescent Garden		48	3gal	DIN	Doug Ingram	
Asplenium 'Leslie'	Circle Garden	East perimeter	40	1gal	EXC		
Begonia 'Frosty'	Visitor's Center-containers	Containers	20	K07	CBG	CBG grown from Ball plugs	
Begonia 'Lotusland' (sub w/ B.nelumbifolia?)	North Stairs	Containers	14	1gal	CBG	CBG stock? Or use other Begonia	
Begonia luxurians	North Stairs	Containers	8	2gal	CBG	CBG overwintered, sub for other	
Begonia luxurians	Extra	Containers	6	2gal	CBG	CBG cuttings, 2 containers	
Begonia nelumbifolia	North Stairs	Containers	10	2gal	CBG	CBG stock? Purchase plants (Taylor Greenhouses-NY)	
Bismarkia nobilis	Circle Garden	Quads	4	(4) 4-5 ft	EXC		
Bismarkia nobilis	Crescent Garden		2	(2) 4-5 ft	EXC	3 sizes	
Bismarkia nobilis	Crescent Garden		4	(4) 5-6 ft	EXC	3 sizes	
Bismarkia nobilis	Crescent Garden		2	(2) 7-8 ft	EXC	3 sizes	
Blechnum brasiliense	Circle Garden	Secret Squares	32	2gal	EXC	16 per side	
Bougenvillea 'Royal Purple'	Hayracks-side boxes		18	1gal	CBG	6 x 3 ea crate, CBG from Ball Plugs, need trailing plant?	
Brilliantasia subulugurica	Extra	Containers	18	1gal	CBG	CBG stock, extra for filler, mid season change-out	
Calotropis gigantea	Circle Garden	Quads	20	2gal	DIN	3 ft tall	
Calotropis gigantea	Crescent Garden	filler	14	2gal	DIN	extra if needed?	
Canna 'Pretoria'	Crescent Garden		60	3gal	EXC		
Canna 'Red King Humbert' (or similar)	Grunsfeld	Wind Bed	18	2gal	EXC	sub if needed??	
Canna Tropicana™	Circle Garden	Quads	40	2gal	MON		
Carex testacea	Crescent Garden		140	1gal	CLW		
Carex testacea	Gatehouse		180	1gal	CLW		
Carica papaya	Extra	Containers	2	2gal	EXC		
Ceratozamia mexicana (for HER stairs)	Heritage Garden-containers *	Steps-LongShadow	2	14"	Botanics	4 ft diam w/ trailer (Cissus) Cost? Less expensive?	
Cissus discolor	Circle Garden	Containers	28	SVD4	CBG	for Licuala containers, 7 per cont.	
Cissus discolor	Hayracks		288	SVD3	CBG	24 x 12=288	
Cissus discolor	North Stairs	Containers	37	SVD4	CBG	4 containers w/ 9 each	



Receiving the plants from Florida 2 weeks prior to installations



- 1 = *Bromelia nobilis* S-b'
- 2 = *Ceratopogon mexicana*
- 3 = *Zamia fulfuracea*
- 4 = *Canna 'Pretoria'*
- 5 = *Euphorbia cotinifolia*
- 6 = *Colocasia 'Hawai Punch'*
- 7 = *Melanthus major* (sub? *Strelitzia*)
- 8 = *Salvia leucantha*
- 9 = *Aechmea 'Blue Tango'*
- 10 = *Croton (yellow)*
- 11 = *Neoregelia 'Sunkiss'*
- 12 = *Aechmea 'Pinot Noir'*
- 13 = *Clusia sp.*
- 14 = *Solanum quitense*
- 15 = *Oxymorpha 'Golden Fingers'*
- 16 = *Quercus marmorata*
- 17 = *Ruellia brittoniana*
- 18 = *Thevetia peruviana*
- 19 = *Scaevola purpurea* 'Kartus G'
- 20 = *Carex testacea*
- 21 = *Cordyline australis 'Purpurea'*
- 22 = *Aloe 'Safari'*
- 23 = *Aphelandra hartwegiana*
- 24 = *Coprosma 'Evening Glow'*

Filters

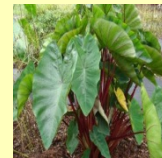
Sedum 'Angelina'
Bougainvillea 'Guavilla Green'
Humelia patens

Chicago Botanic Garden
Esplanade - Crescent Garden
PP0371
 Date: 11/20/15
 Source data: Aerial Photography dated March 22, 1996
 File format: AutoCad, SCL
 Map presentation: ArcGIS

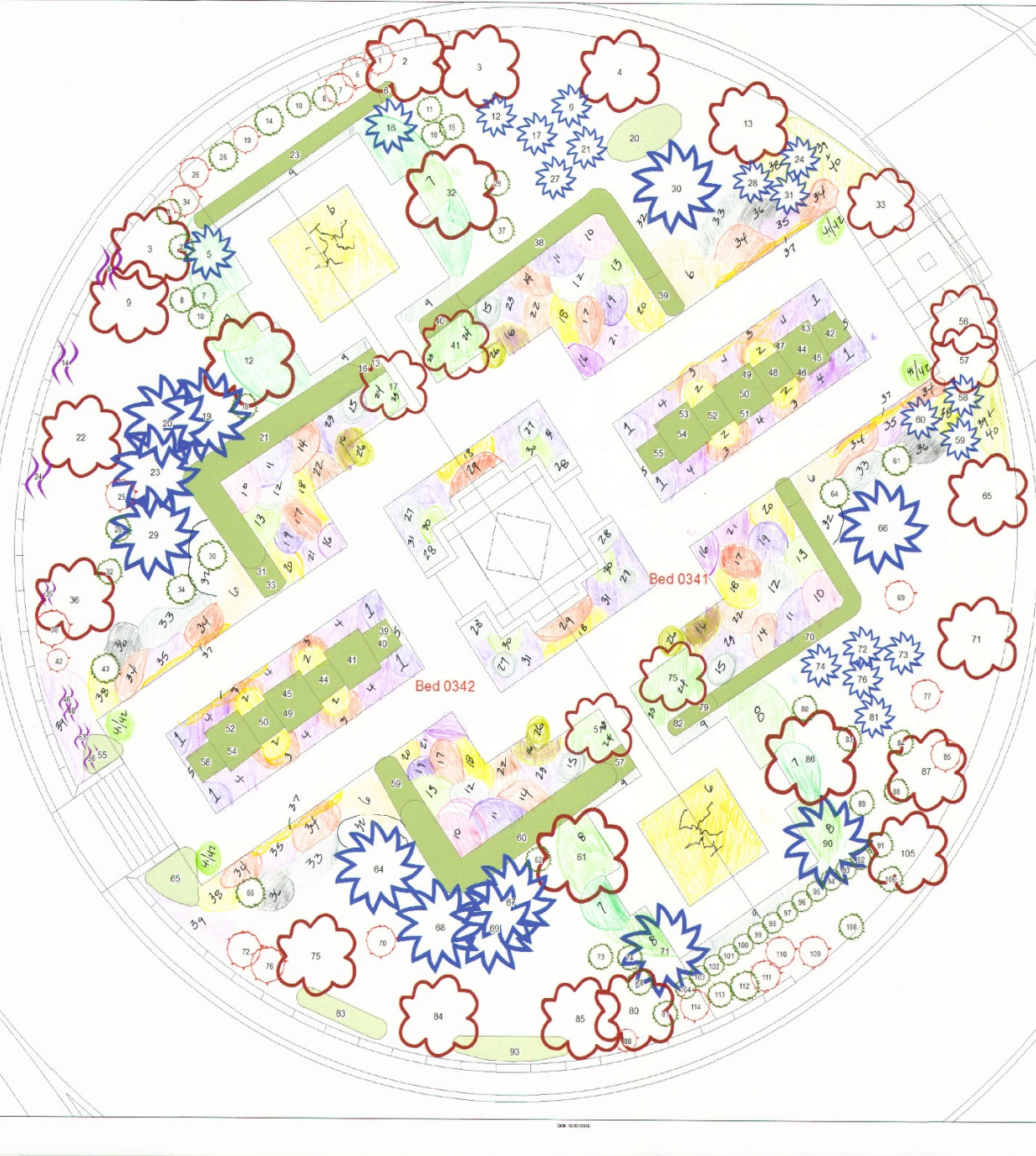
SHR_E SHR_D VINE EBP
 TRE_E TRE_D SHR_N TRE_N
 CGV_E CGV_D PERE TREE LAWN
 SHR_E SHR_D BULB AQUA VINE



Crescent Garden







- 1 = Tibouchina urvilleana
- 2 = Aechmea 'Yellow Berries'
- 3 = Aloe 'Hedgehog'
- 4 = Neoregelia 'Royal Burgundy'
- 5 = Dichondra argentea
- 6 = Stipa tenuissima
- 7 = Cyathea australis 4-5
- 8 = Dianella tasmanica 'Variegata'
- Heliconia 'Bourbon Dwarf'
- Peperomia brasilense 'Crispum'
- 9 = Pleuranthus 'Silver Shield'
- 10 = Ensete ventricosum 'Maswellii'
- 11 = Salvia leucantha
- 12 = Calotropis gigantea
- 13 = Cyperus 'King Tut'
- 14 = Canna 'Tropicana'
- 15 = Bromelia nobilis 6-7
- 16 = ~~Bromelia~~ *Setcreasea* 'Karl's Giant'
- 17 = Aechmea 'Dean'
- 18 = Oryzomylon 'Golf Fingers'
- 19 = Tibouchina grandifolia
- 20 = Mahoea esculenta 'Vase'
- 21 = Pennisetum 'Prince'
- 22 = Coprosma 'Evening Glow'
- 23 = Ruellia brittoniana
- 24 = Aechmea fascicularis
- 25 = Thunbergia grandiflora
- 26 = Zamia angustifolia
- 27 = Conocarpus erectus - tree
- 28 = Alcantarea imperialis
- 29 = Aphelandra hirtelliana
- 30 = Cyperus 'Bam Tut'
- 31 = Strobilanthes *gymnophylla*
- 32 = Alpinia 'Morbid'
- 33 = Conocarpus erectus - shrub
- 34 = Neoregelia 'Rustic'

37 = Sedum 'Angelina'

38 = Strobilanthes *gymnophylla*

39 = Begonia 'Caribbean Corsair'

40 = Asplenium 'Loylie'

41 = Licuala grandis

42 = Cissampelos discolor

43 = Colocasia 'Cool Miner'

0 5 10 20 Feet

Circle Gardens, East and West

PP0341 and PP0342

Chicago Botanic Garden

Chicago Botanic Garden

Chicago Botanic Garden

Circle Garden





CHICAGO BOTANIC GARDEN

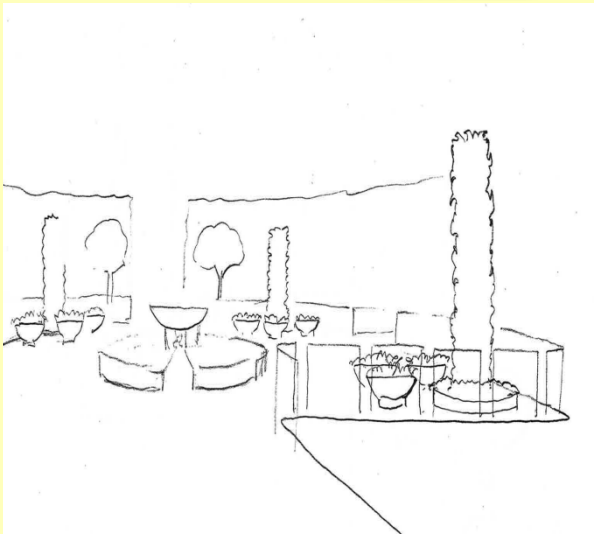
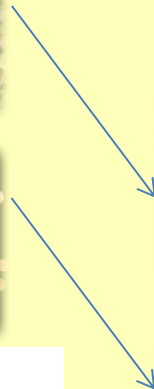



CHICAGO BOTANIC GARDEN



Heritage Garden Wow

3 corners: 11' x 3' Bromeliad Towers with 3 fire pit containers around each



Bromeliad Towers assembled by Maintenance staff









HERE ARE FIVE PLANTS TO LOOK FOR



Plant: Bromeliad (*Aechmea blanchetiana*)

Location: Lake Cook Road entrance and Gatehouse

Cool facts: The large, strap-like foliage bromeliads are iconic landscape plants and are endemic to Brazil. The bromeliads are key to tying all our garden designs together.



Plant: Palm leaf begonia (*Begonia luxurians*)

Location: Regenstein Center north stairs

Cool facts: This part-sun begonia is endemic to Brazil. It's grown mostly for the great texture of its foliage.



Plant: Bismarck palm (*Bismarckia nobilis*)

Location: Circle and Crescent Gardens

Cool facts: This Madagascar native has a strong architectural presence and has striking silvery-white foliage.



Plant: Elephant ear (*Colocasia esculenta* 'Mau' Gold')

Location: Visitor Center

Cool facts: This showy plant is grown as a root crop known as taro, which is popular in Brazil. Elephant ears—along with cultivars of *Canna* and banana plants—are popular tropical foliage plants.



Plant: Princess flower (*Tibouchina urvilleana*)

Location: Circle Garden, Lake Cook Road entrance, Visitor Center, Gatehouse, and the Buehler Enabling Garden

Cool facts: This tropical shrub, which is endemic to Brazil, has felted leaves and a profusion of striking purple flowers.

Planters have been generously donated by Longshadow.

Look up Brazil in the Garden plants with the free GardenGuide app.



CHICAGO BOTANIC GARDEN
1000 Lake Cook Road, Glencoe, Illinois 60022
chicagobotanic.org

BRAZIL IN THE GARDEN

JUNE 15 - OCTOBER 15

BMO Harris Bank

NorthShore
University HealthSystem

BRAZIL IN THE GARDEN

BOLD. VIBRANT. BIODIVERSE.

Throughout the Garden, we're paying tribute to the vibrant spirit of Brazil, one of the most biodiverse and beautiful countries in the world. For four months, you'll get a taste of the tropics.

Look for samba by the lake, the Brazilian national cocktail Caipirinha in the café, cool plants including 20-foot-high coconut palms outside the Visitor Center, and much more.

Come back throughout the seasonal exhibition and discover something new.



MUSIC NIGHTS: BRAZIL

6 to 8 p.m., the Esplanade or McGinley Pavilion

June 15	Planeta Azul (<i>Brazilian Carnival</i>)
June 20	Carpacho Super Combo (<i>Brazilian/Latin Jazz</i>)
July 18	Rio Bamba (<i>Brazilian Jazz</i>)
July 20	Dill Costa Quartet (<i>Brazilian Samba</i>)
August 15	Luciano Antonio Quartet (<i>Brazilian Jazz/Bossa Nova</i>)
August 17	Chicago Samba (<i>Brazilian Samba</i>)

GARDEN CHEF SERIES: BRAZIL

1:30 and 2:30 p.m., Regenstein Fruit & Vegetable Garden

June 17	Jorgina Pereira from Sinhá
July 1	Cristiane Pereira from Taste of Brasil Café
July 30	John Manion from La Sirena Clandestina
September 10	Tony Castillo from Longitud315



Learn more about Brazil's rich biodiversity at the Lenhardt Library's *Flora Brasil* exhibition.

DON'T MISS THESE HIGHLIGHTS

The Roberto Burle Marx exhibition in the Jourtas Gallery (through Sept. 10): Original paintings, landscape plans, and other work by Burle Marx, the Brazilian landscape architect whose bold, modernist style made him world famous. Look for his influence in our garden designs for Brazil in the Garden.



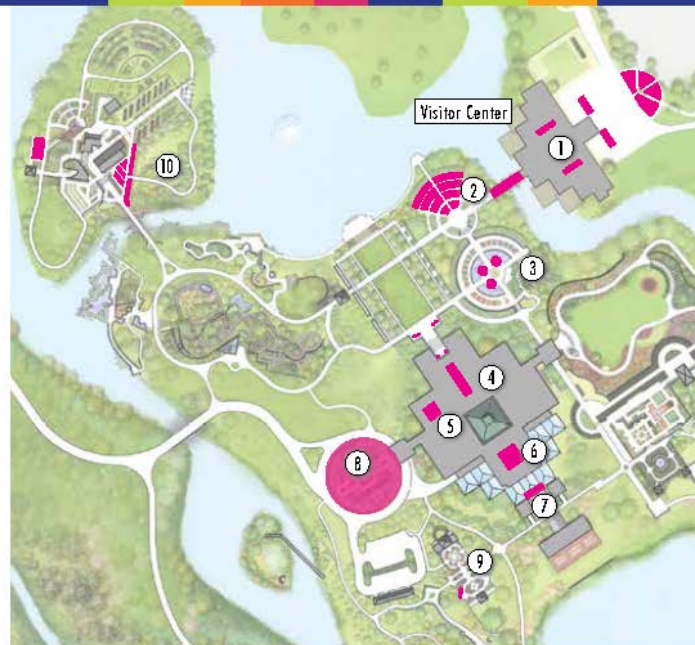
Burle Marx embraced bold colors and abstract shapes in his work.

The Bromeliad Towers in the Heritage Garden: Topiary-like towers, 11 feet tall, filled with showy bromeliads in reds and burgundys, surrounded by giant planters brimming with tropical plants.

The Hanging Gardens in the Tropical Greenhouse: The shapes, textures, and architecture of Brazilian plantings are featured here, with big panels creating a mosaic-like display of lush foliage plants.

The Brazil-Infused Circle Garden: A mass of color and texture, including elephant ears, with dazzling leaves that can grow up to 4 foot wide, and 12-foot tall red Abyssinian banana plants.

SHARE BRAZIL IN THE GARDEN:
#CBGBRAZIL



Featured areas with Brazil-inspired plantings and exhibitions

- 1 Visitor Center
- 2 The Crescent
- 3 Heritage Garden
- 4 Regenstein Center
- 5 *Flora Brasil* Library Exhibition
- 6 Roberto Burle Marx Exhibition
- 7 Greenhouses
- 8 Circle Garden
- 9 Enabling Garden
- 10 Fruit & Vegetable Garden

Tim Pollak

Outdoor Floriculturist, Chicago Botanic Garden

tpollak@chicagobotanic.org

847-835-8233

