



Modern Public Parks Advances the Public Botanical Enrichment



Wednesday, June 21st



Presenters Andi Pettis, Scott Stewart,
Greg Levine, and Tom Smarr











environmental movement



(1803 - 1882)
Ralph Waldo Emerson
& (1817-1862)
Henry David Thoreau



1872 Establishment of
Yellowstone National Park



1949
A Sand County Almanac
by Aldo Leopold

1858 Central Park, NY
Designed by
Calvert Vaux & Frederic Law Olmsted



1961 *Silent Spring*
by Rachel Carson







EXIT 26
Storrow Dr.
Cambridge
1/4 MILE

EXIT 25
Causeway St.
N. Station

See actual size
(This head)
Hill's

Hill's
Follow

SPEED
LIMIT
35



Central Park

operated by Central Park Conservancy
owned by the City of New York

Frederick Law Olmsted and Calvert Vaux, winners of the 1858 design competition





Reimagining the Urban Park

- Celebrate and restore historic parks
- Reimagine abandon spaces and relics
- Plan in opportunities in redevelopment
- Preserve and plan ahead of urban expanse

FRIENDS OF THE HIGH LINE

Andi Pettis
June 22, 2017











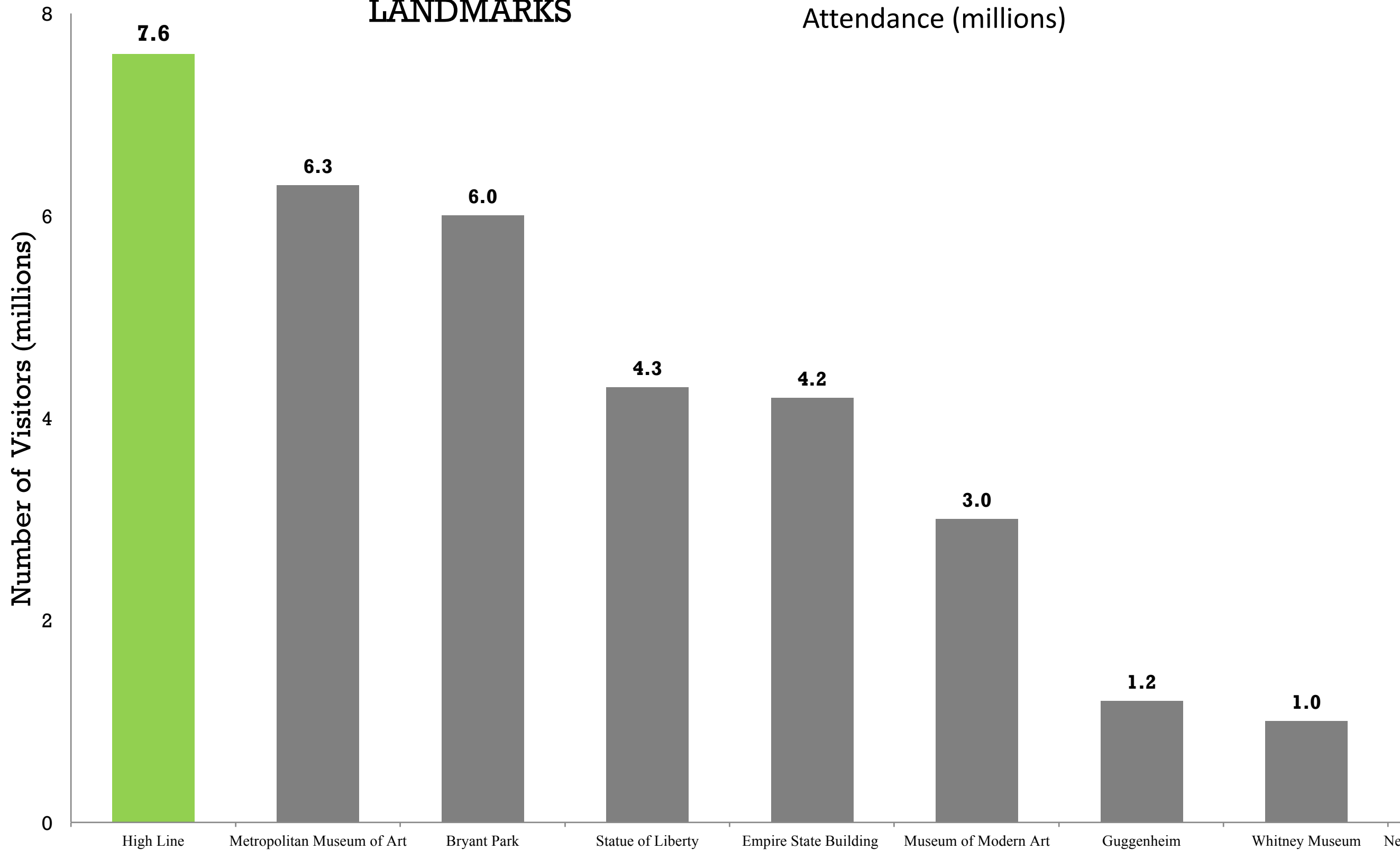




UNPRECEDENTED SUCCESS

AMONG NYC'S MOST VISITED LANDMARKS

Attendance (millions)















Celebrating the **GRASSLANDS**

Presented by Friends of the High Line

All September, celebrate
the Chelsea Grasslands
with Friends of the High
Line. Planted between
18th and 20th Streets, the
Grasslands are inspired
by the tallgrass prairie of
the American Midwest.

grasslands.thehighline.org



STAY CONNECTED
WITH @HIGHLINE



TD Bank is the Presenting
Green Sponsor of the High Line

**prairie
dropseed**

Sporobolus heterolepis



When flowering, this grass has a distinct fragrance.
Some liken it to cilantro, others think it smells like
buttered popcorn.























Horticulture as Culture

**How Millennium Park & Lurie Garden
Define a Horticultural Experience**

Scott Stewart, Ph.D.

Executive Director, Millennium Park Foundation

Millennium Park

Chicago, Illinois

Millennium Park & Lurie Garden



Millennium Park & Lurie Garden



Millennium Park & Lurie Garden



Millennium Park

- **Timeline:**
 - Idea Born, 1997
 - Plan Approved, May 1998
 - Fundraising Initiated, June 1998
 - Construction Initiated, October 1998
 - Completed, July 2004
- **Designers & Artists:**
 - Skidmore, Owings & Merrill (SOM)
 - Anish Kapoor
 - Jaume Plensa
 - Frank Gehry
 - Renzo Piano
 - Edward Uhler
- **Size: 24.5-Acres**

Millennium Park

- Staff:
 - Millennium Park Foundation, 2 FT
 - Millennium Park, ~150 FT + PT (peak season)
 - DCASE, ~40 FT + PT (peak season)
- Visitors: 20 Million (2016)
- Programming: ~500 Free Public Cultural Programs & Activities Annually
- Costs:
 - \$490 MM (\$220 MM Private + \$270 MM Public)
 - \$10 MM Annual Operating Budget

\$6.5 MM Annual Operating Budget

Lurie Garden

- Timeline:
 - International Competition, August-October 2000
 - Commissioned, October 2000
 - Completed, June 2004
- Designers:
 - Gustafson Guthrie Nichol, Lead LA Design
 - Piet Oudolf, Perennial Plant Design
 - Jacqueline van der Kloet, Bulb Design
- Size: 3.5-Acres (2.5-Acres as Perennial Beds)
- Plant Diversity: ~220 Species, Selections, and Cultivars

Lurie Garden

- Staff: 4 Full-Time, 2 Seasonal Apprentices, 65-70 Volunteers
- Visitors: 2.25 Million (2016 est.)
- Education & Outreach: ~80 Free Public Programs Annually
- Visitor Experience:
 - Free App-Based Tour by GrowIt!
 - Web-Based Plant Finder
 - Free Tours by Trained Volunteers (3X per week)

Influence of Millennium Park

- Local:
 - Town Square
 - Cultural Learning Space
- National/International:
 - Benchmark Case Study
- Political:
 - Cultural Environment Conversation
 - Budget Priorities/Force



Influence of Lurie Garden

- Paradigm Shift in Public Landscape Design
- Long-Term Relationships with Designers
- Operated as Public-Private Venture



Connections & Partnerships

- Lurie Garden + NeighborSpace
 - Creates neighborhood presence
 - Bring public garden to new, diverse audience
- Millennium Park + Illinois Science Counsel
 - Adult-oriented science + arts programming
- Millennium Park + Chicago-Based Talent
 - Leverage to promote Chicago landscape talent

Horticulture as Culture

How Millennium Park & Lurie Garden Define a Horticultural Experience

Scott Stewart, Ph.D.

Executive Director, Millennium Park Foundation

scott.stewart@mpfdn.org

Web: millenniumparkfoundation.org

Web: luriegarden.org

Facebook: Lurie Garden

Twitter: @LurieGarden

Instagram: [luriegarden](https://www.instagram.com/luriegarden)

Pinterest: [luriegarden](https://www.pinterest.com/luriegarden)



The Atlanta BeltLine Arboretum

A garden without a gate

June, 2017

Greg Levine,
Co-Executive Director

Trees Atlanta - Community Citizen's Group

- Dedicated to protecting the urban forest by planting, conserving and educating



Atlanta BeltLine 2005 Components

- Trails
- Transit
- Re-development
- Parks
- Reconnecting the City



Ryan Gravel



Imagine what it might have been!



One Big Experiment: Arboretum-A Gateless garden

- Restoring highly contaminated sites
- Invasive species
- Soil
 - Sterile
 - High ph



Beltline Arboretum – A Unique Opportunity For Public Horticulture

- Connecting our mission to the people everyday



A Public Arboretum

- Always open, free, currently running through 13 neighborhoods
- New developments- building along the linear arboretum
- Repeat users for recreation, travel and socializing
- Captured Audience
- Level 2 accreditation by Morton Arboretum



High Visitation, Quickly Growing Audience and Organization

BeltLine Arboretum 2016

- Over 1.7 million visitors a year
- 4000 volunteer hours (1 100 Corporate)
- 1000 visitors on docent tours

Organization growth since 2011

- Nearly doubling yearly volunteer hours to 33,000 in 2016
- Budget from 1.7 to 4.2 million
- Opened second facility - the Tree House

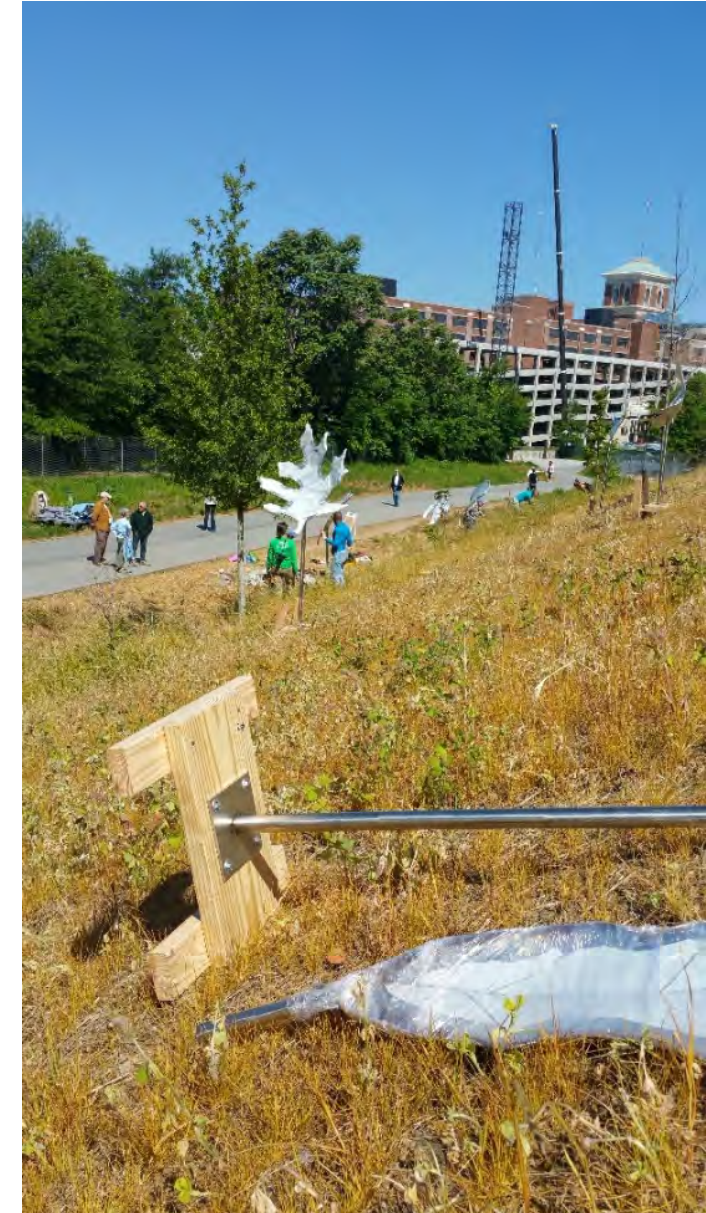


Education Opportunities

- Signage
 - Public Horticulture
 - Restoration
 - Collections
- Environmental Education (Tree House)
- Hands on community involvement – Learn by doing!
- Cross Marketing

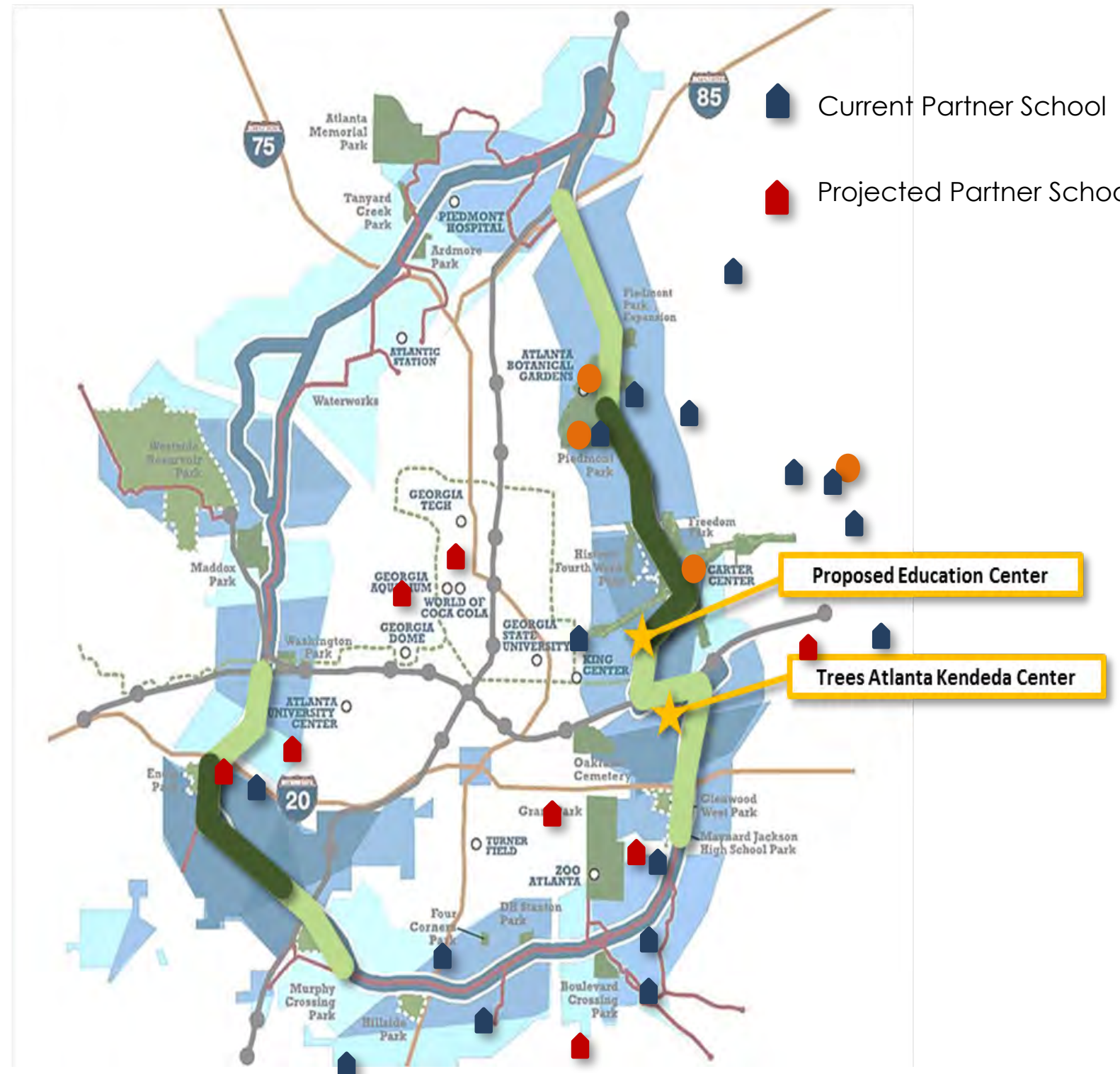


Art As Education



Physical Presence Grows Partnerships

- Atlanta School System
- Atlanta Canopy Alliance
- Parks Department
- Atlanta BeltLine Inc



Environmental Benefits

- Over 3000 trees planted - 150 woody species and cultivars
- 12 acres of meadow - 60 species
- 5 times the bees species as turf near by
- Replacing a community vector: a monoculture of invasives, community trash and brownfields
- Using less water, chemicals and fossil fuels than in typical parks



Healing the City and Its People

- Reconnecting Neighborhoods
- Bringing people together
- Improving everyone's mobility
- Passion and energy from the community volunteers



Influencing And Educating Professionals

- Adjacent parks and development



Youth Tree Team



Not without Challenges

- Maintenance with so much edge
- Constant use
- Continual construction
- Future Transit
- Ownership



Reach more people –
influence a greener
world

- Find an opportunity
 - Partner with park
 - Be part of infrastructure project
 - If you build it, they will come and fulfill your mission



The Atlanta BeltLine Arboretum





operated by 21st Century Parks
partnership with Metro Louisville and Future Fund
opened in 2012

The Parklands of Floyds Fork

- 4,000-acres in eastern Louisville
- Shelbyville Rd. to Bardstown Rd.
- 4 parks within system named for tributaries
- 27 miles along Floyds Fork creek
- 19 miles of the Louisville Loop (walk & bike trail)
- 2016 completion (started in 2012)

Beckley Creek Park

Pope Lick Park

The Strand
(connector)

Turkey Run Park

Broad Run Park



Partners

Jefferson County Master Gardeners

Yew Dell Botanical Gardens Member "Perks" Partners

Jefferson County Extension Service

Kentucky Fish & Wildlife

Metro Parks

Louisville Metro Government

Louisville Dog Association

Future Fund



Project Scale

NYC's Central Park

778 Acres

High Line

6.73 Acres

Millennium Park (Chicago, IL)

24.5 Acres

Atlanta Beltline (Atlanta, GA)

1,300 Acres of Parks

Lincoln Park (Chicago IL)

1,200 Acres

Shelby Farms (Memphis TN)

4,5000 Acres

Other Louisville Parks

@2,000 Acres

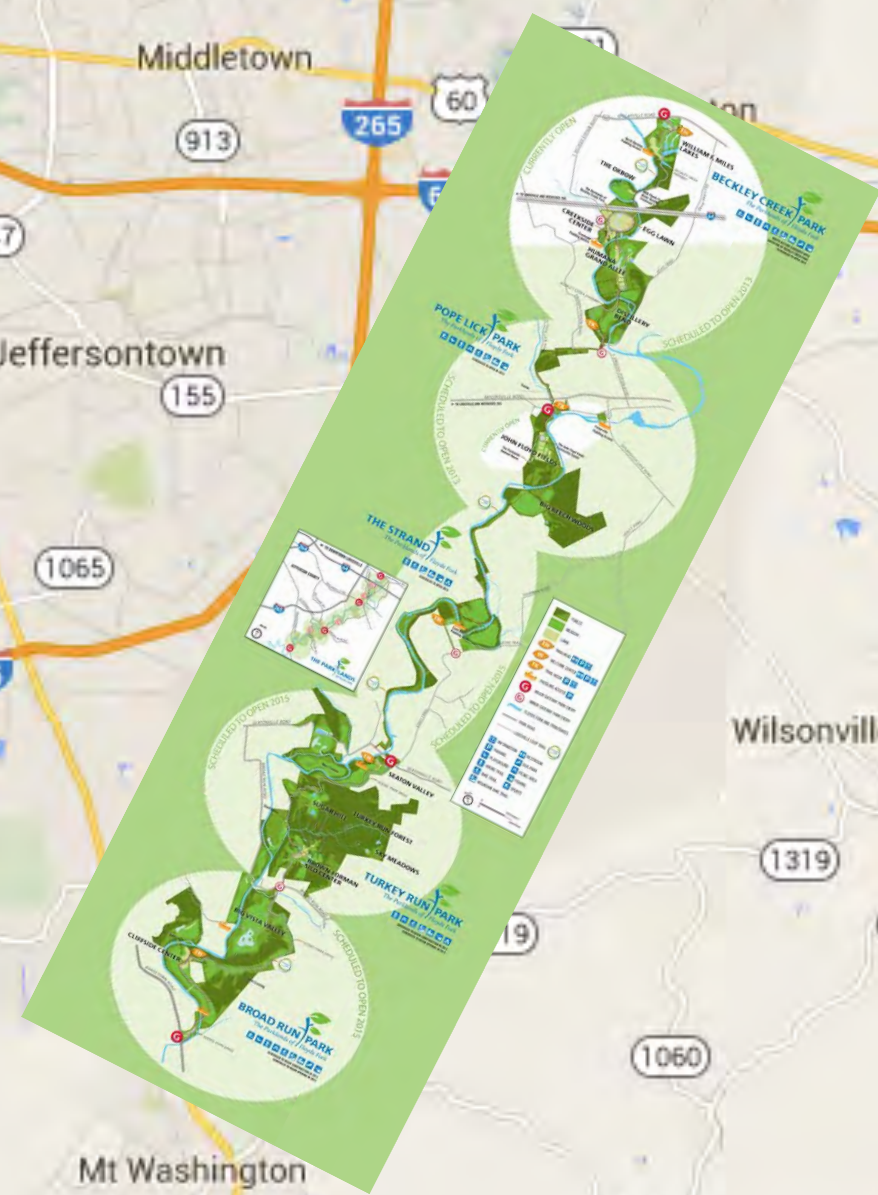
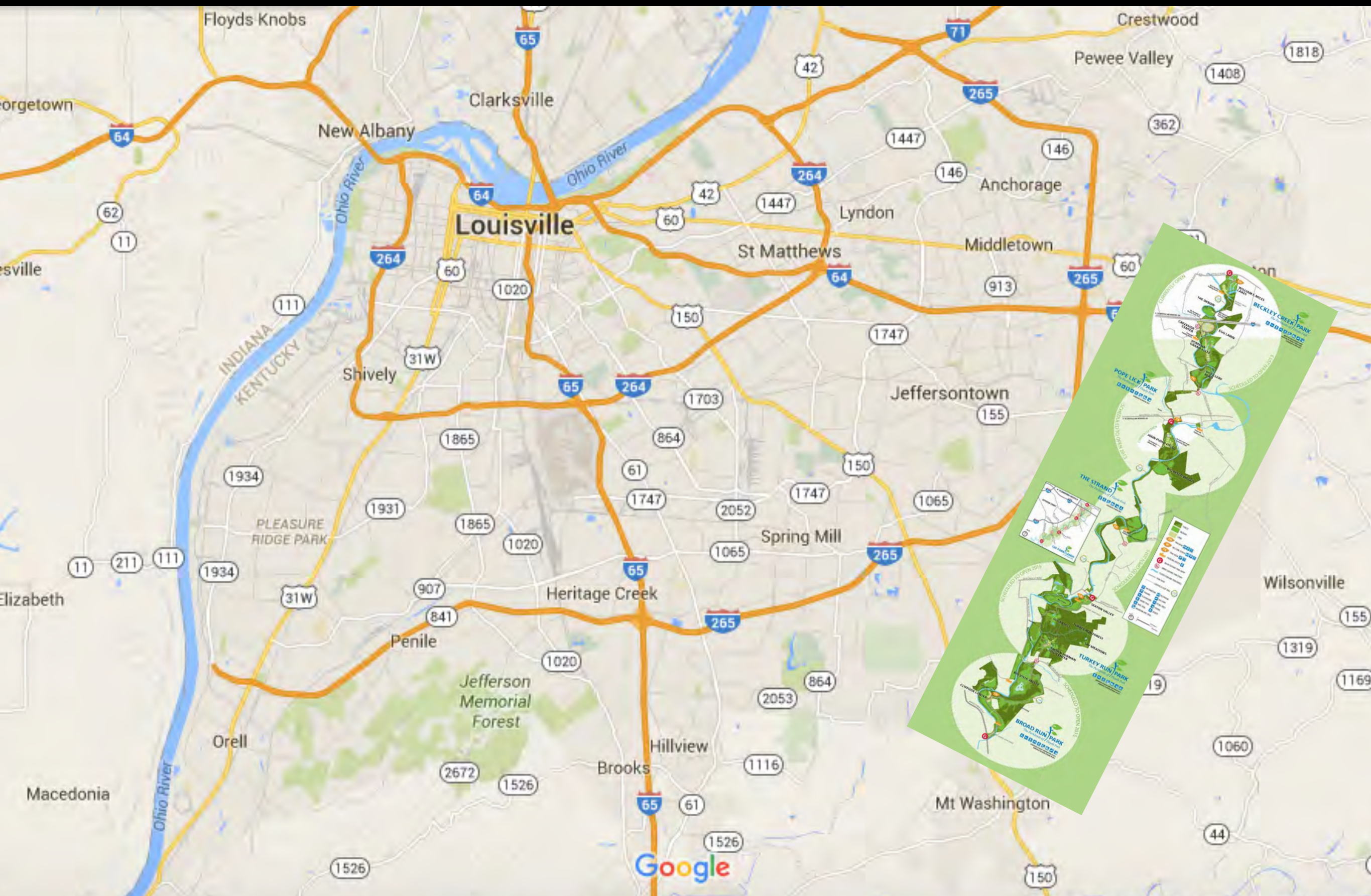
The Parklands (Louisville KY)

4,000 Acres



Impact/Benefits

- Health benefits to the public – play in outdoor activities
- Access to public lands – many lands privately owned or public spaces too far away
- 2.7 million visits in 2016
(population of Louisville is @ 600,000)
- Providing a sustainable ecological landscape





























Woodland Garden



Floyds Fork

Floyds Fork

Floyds Fork

▲
North























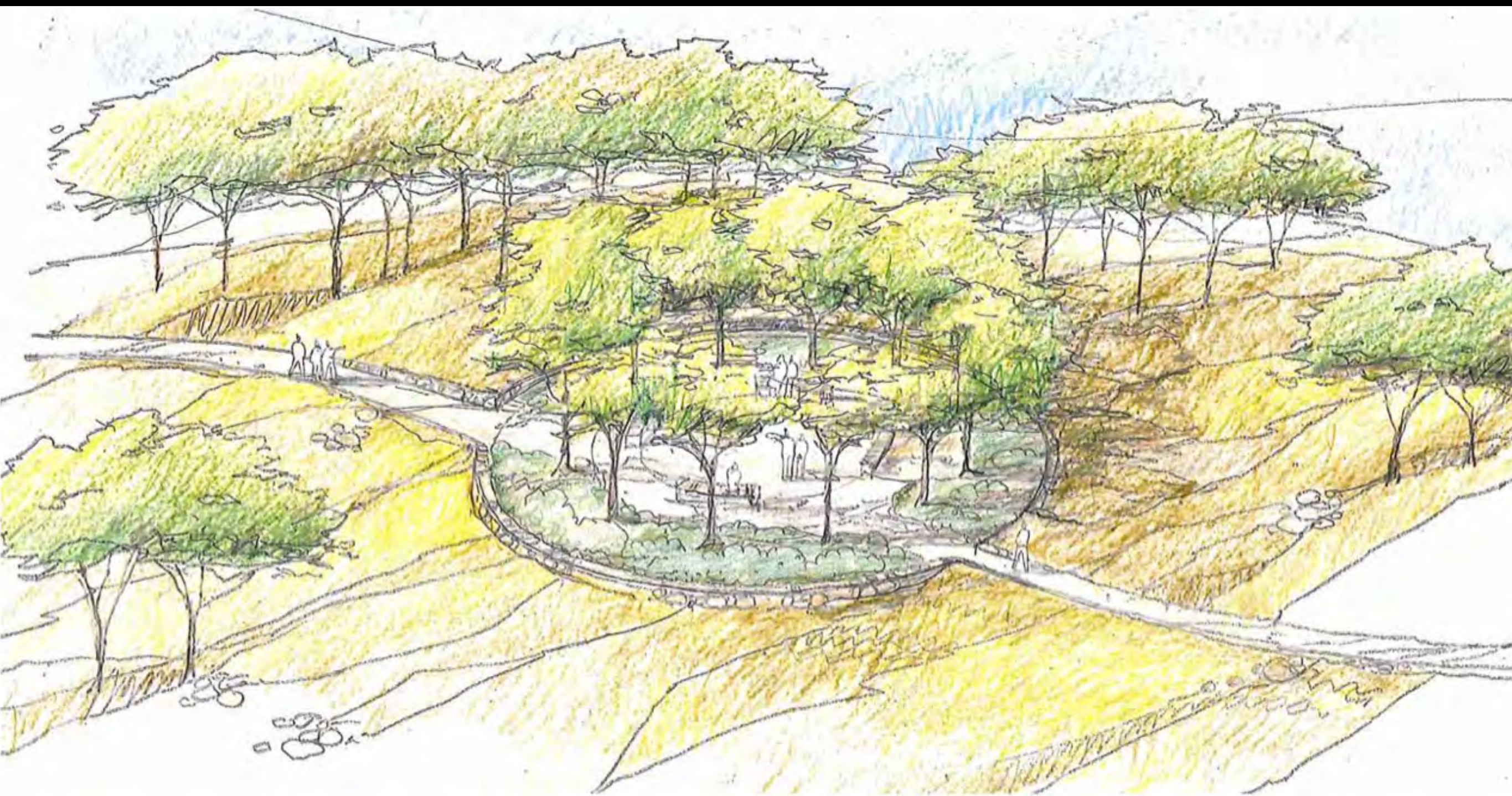














Quercus coccinea – Scarlet Oak







Future for Parks



Presenters

Scott Stewart
Executive Director
Millennium Park Foundation
scott.stewart@mpfdn.org

Thomas Smarr
Horticulture and Natural Areas Director
21st Century Parks / Parklands of Floyds Fork
tsmarr@21cparks.org

Andi Pettis
Horticulture Director
Friends of the High Line
andi.pettis@thehighline.org

Greg Levine
Co-Executive Director
Trees Atlanta
greg@treesatlanta.org