



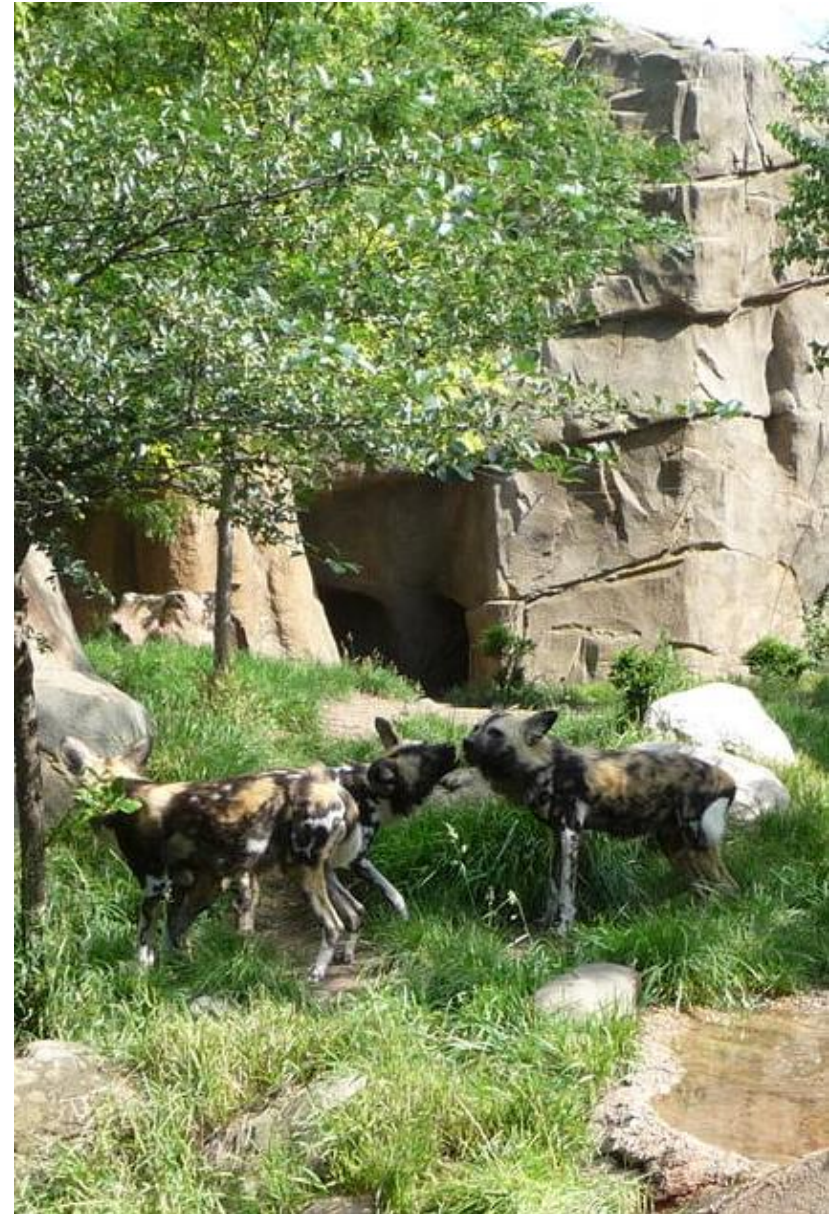
LINCOLN PARK ZOO®
FOR WILDLIFE. FOR ALL.

Joseph Rothleutner

Director of Horticulture

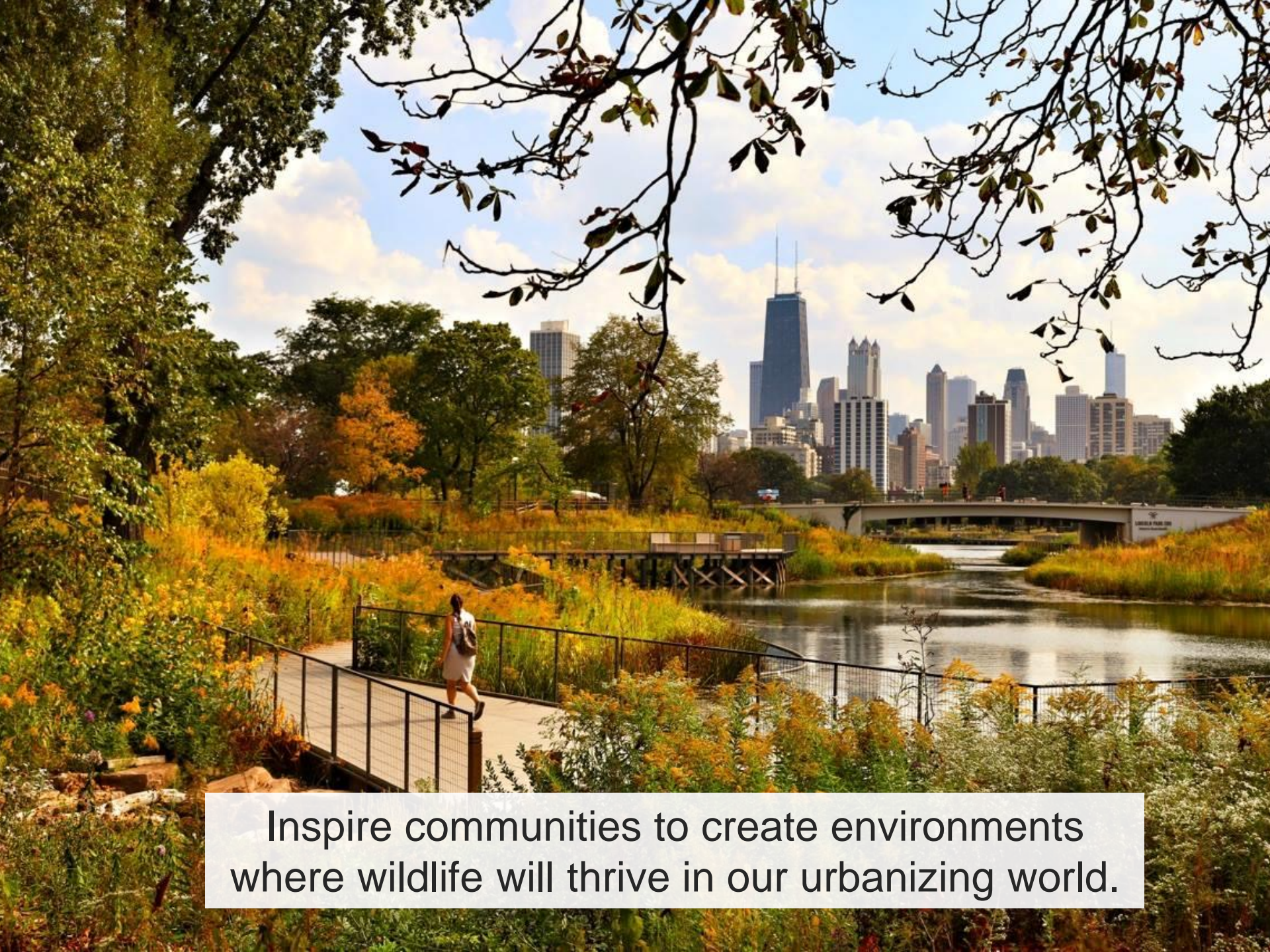
Lincoln Park Zoo 101

- Founded in 1868
- 49 Acres
- Open to Public 365
- 3.8 Million Visitors a Year
- >200 animal taxa
- >1,400 plant taxa



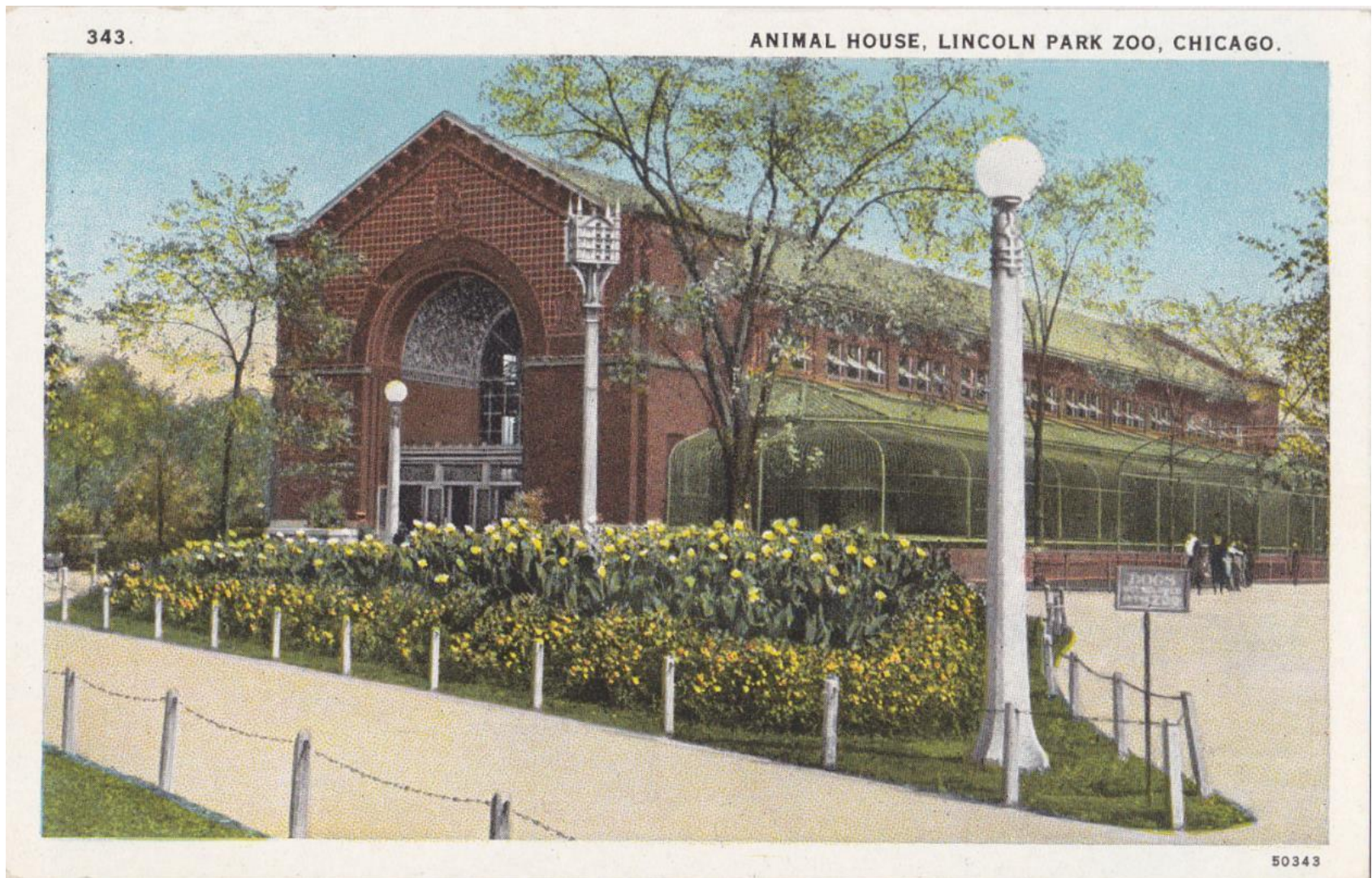


Lincoln Park Zoo is dedicated to connecting people with nature by providing a free, family-oriented wildlife experience in the heart of Chicago and by advancing the highest quality of animal care, education, science and conservation.



Inspire communities to create environments where wildlife will thrive in our urbanizing world.

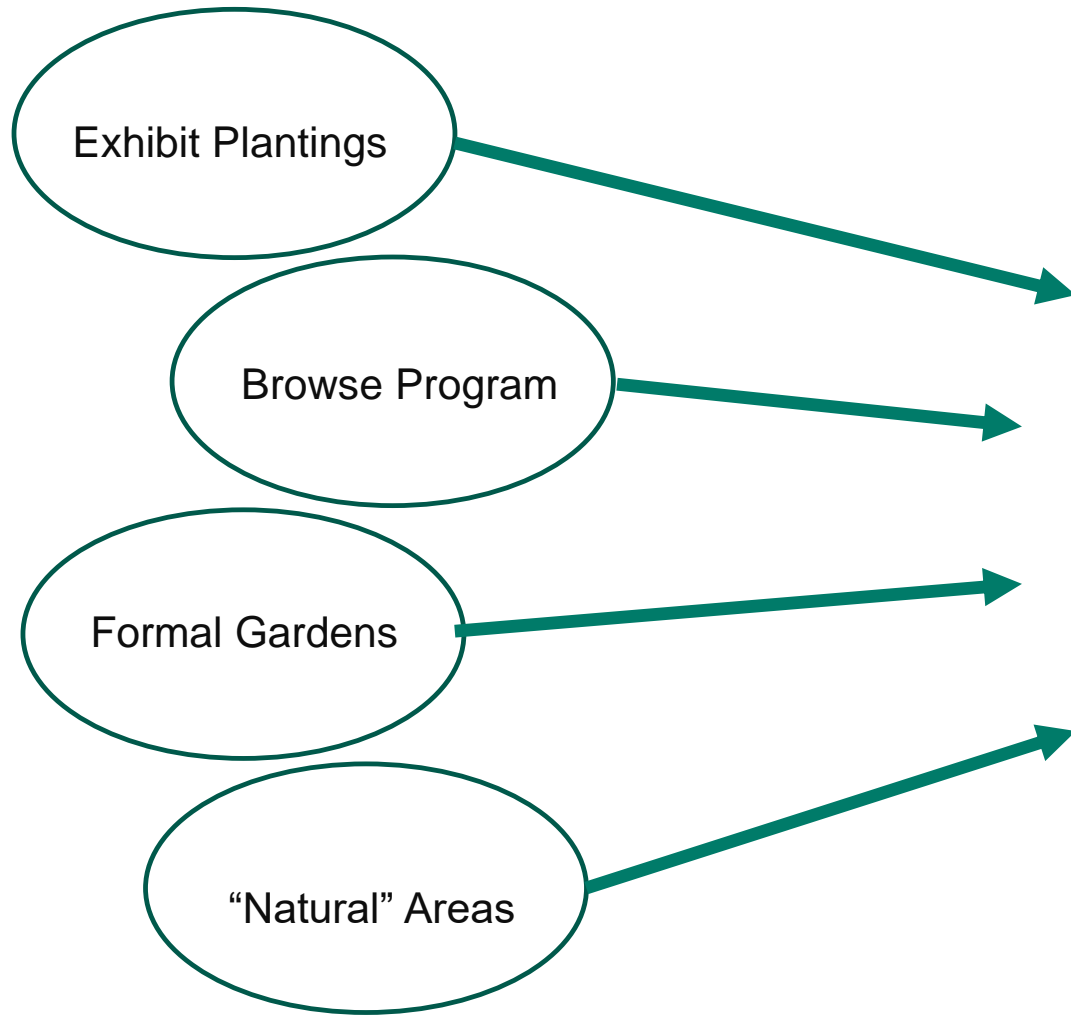
Horticulture in our early years.... (~1920)



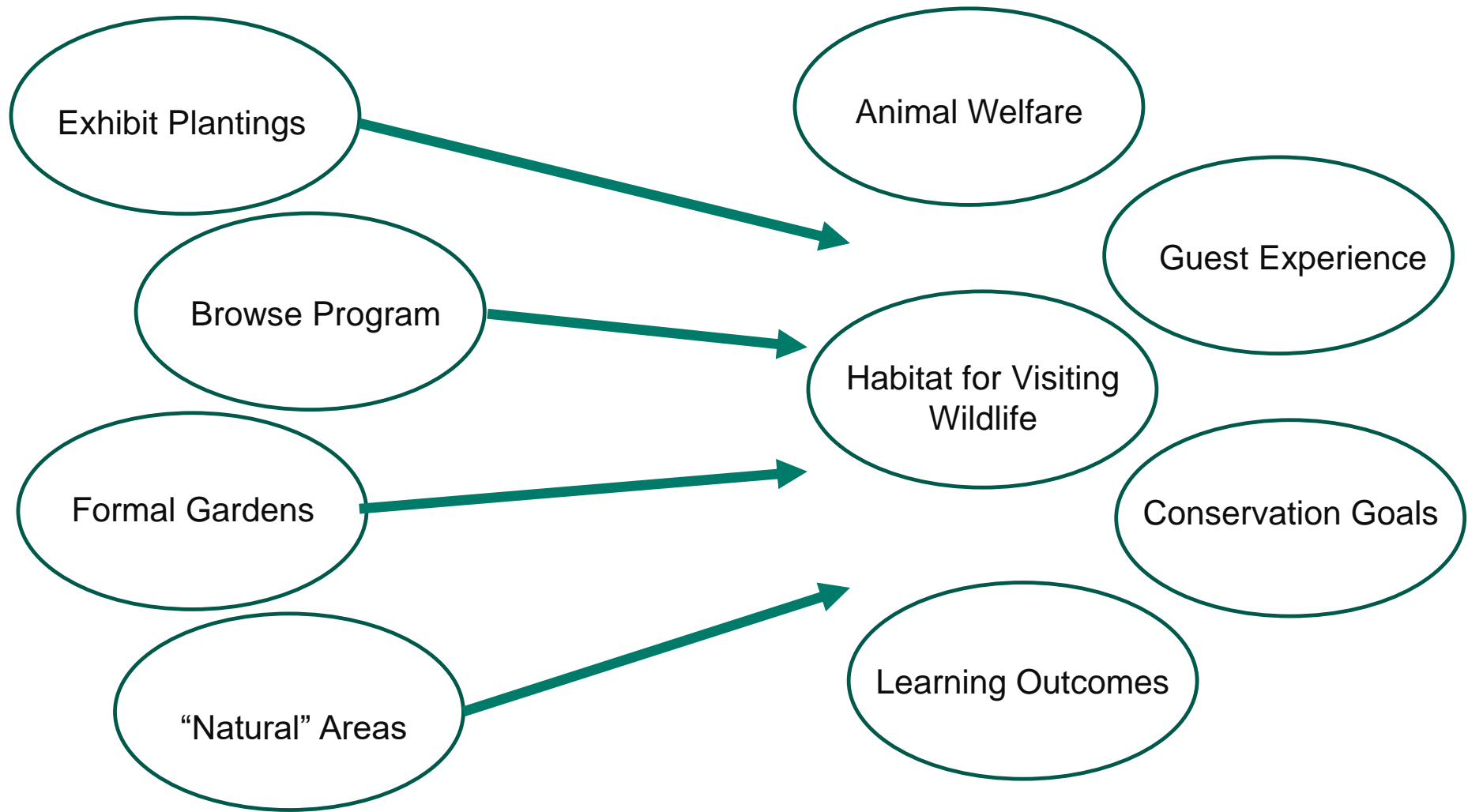
Horticulture in our early years.... (~1920)



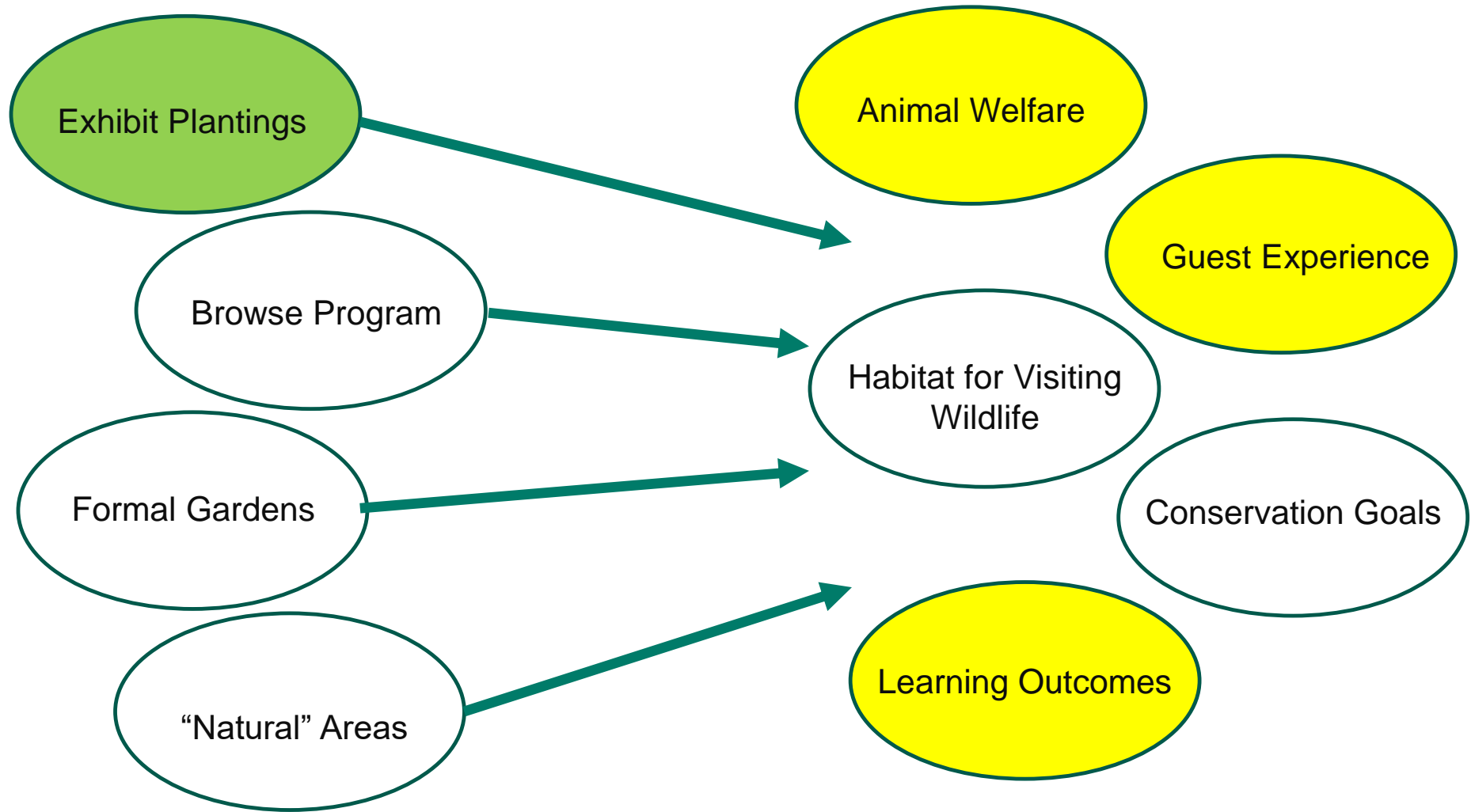
How does Horticulture Fit into the Zoo?



How does Horticulture Fit into the Zoo?



How does Horticulture Fit into the Zoo?



Today's Exhibit Goals



The Walter Family Arctic Tundra



The Walter Family Arctic Tundra



The Walter Family Arctic Tundra



Introducing Siku and Talini



Siku



Talini



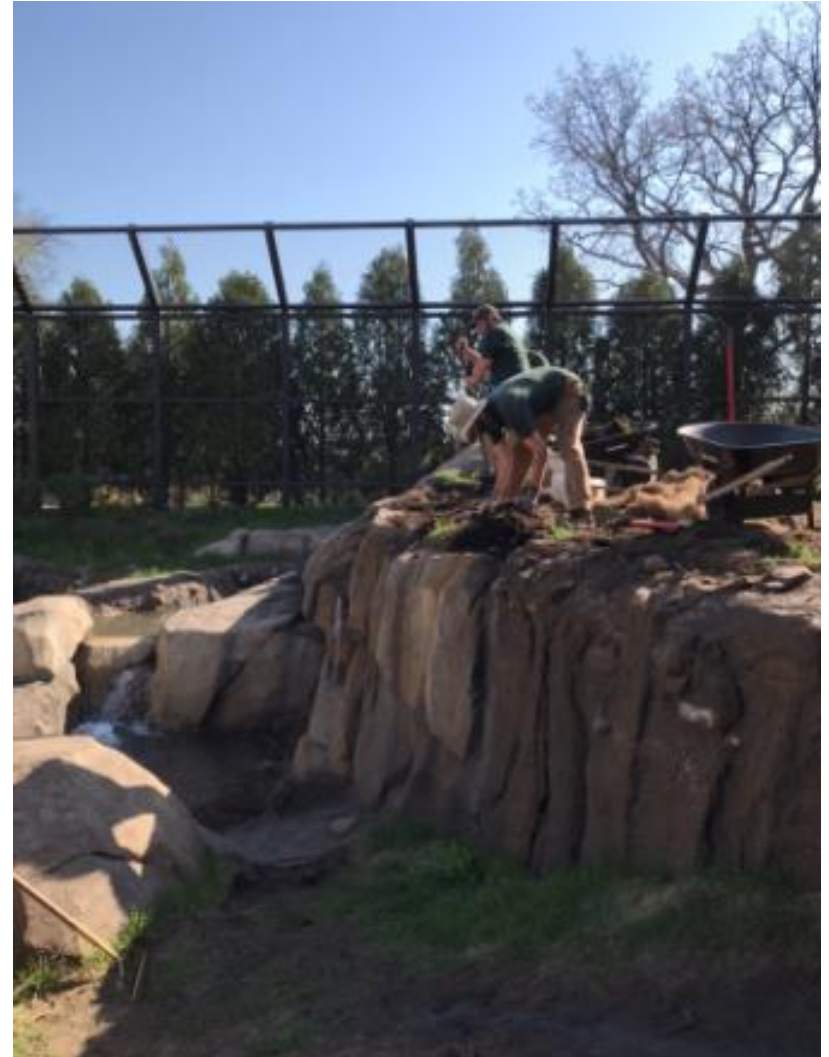
Talini



Big Problems!



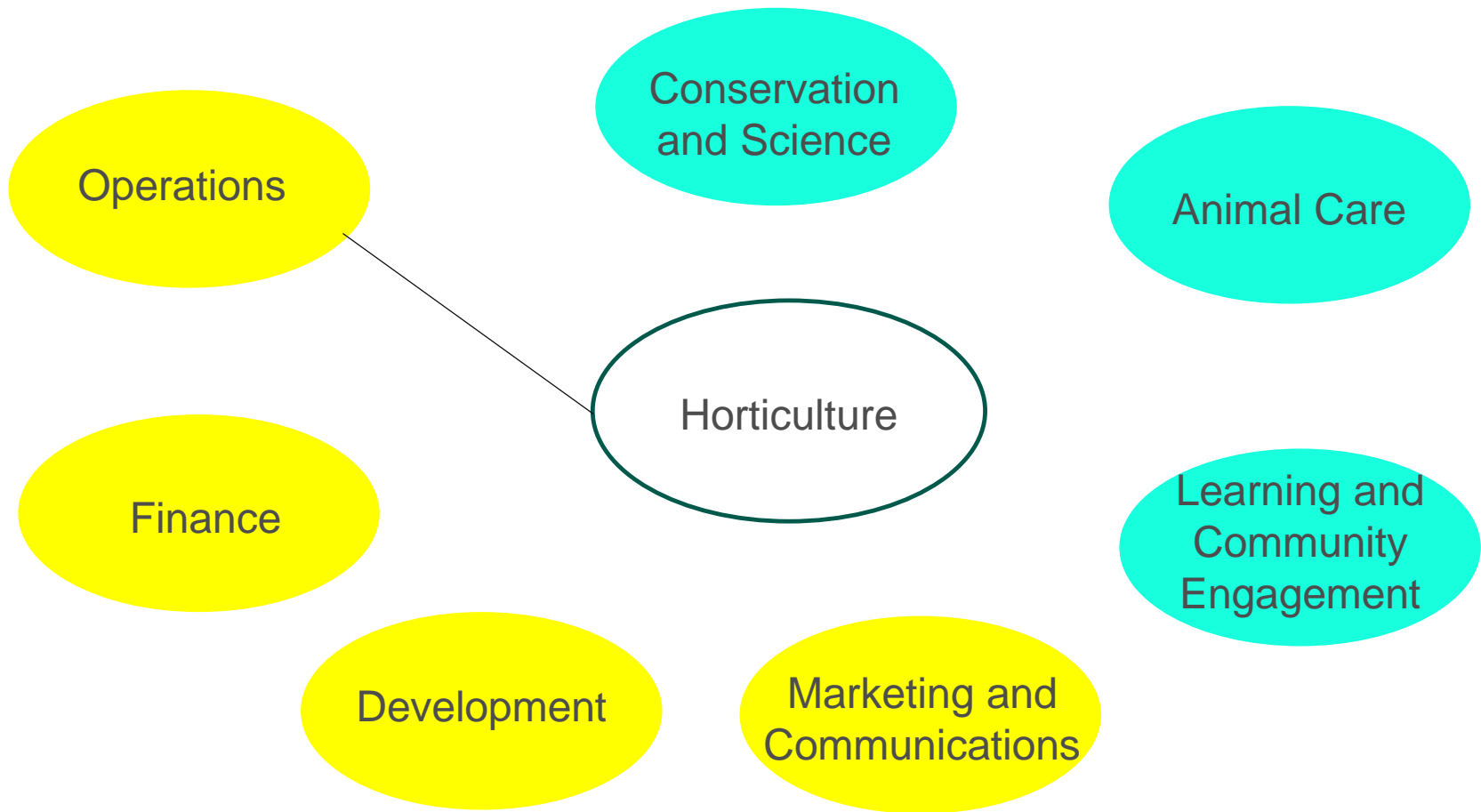
Short Term “Fix”



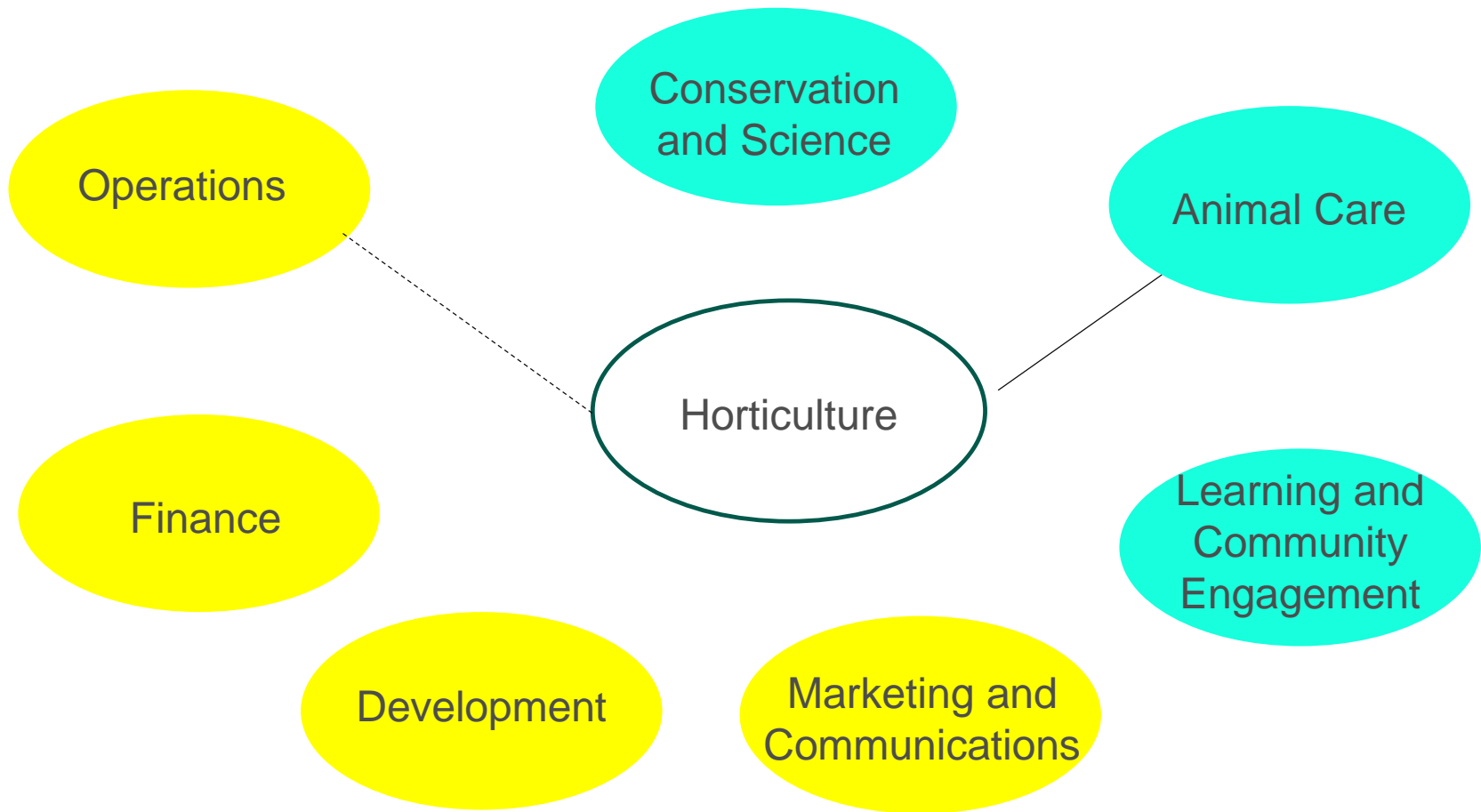
A Medium “Fix”...



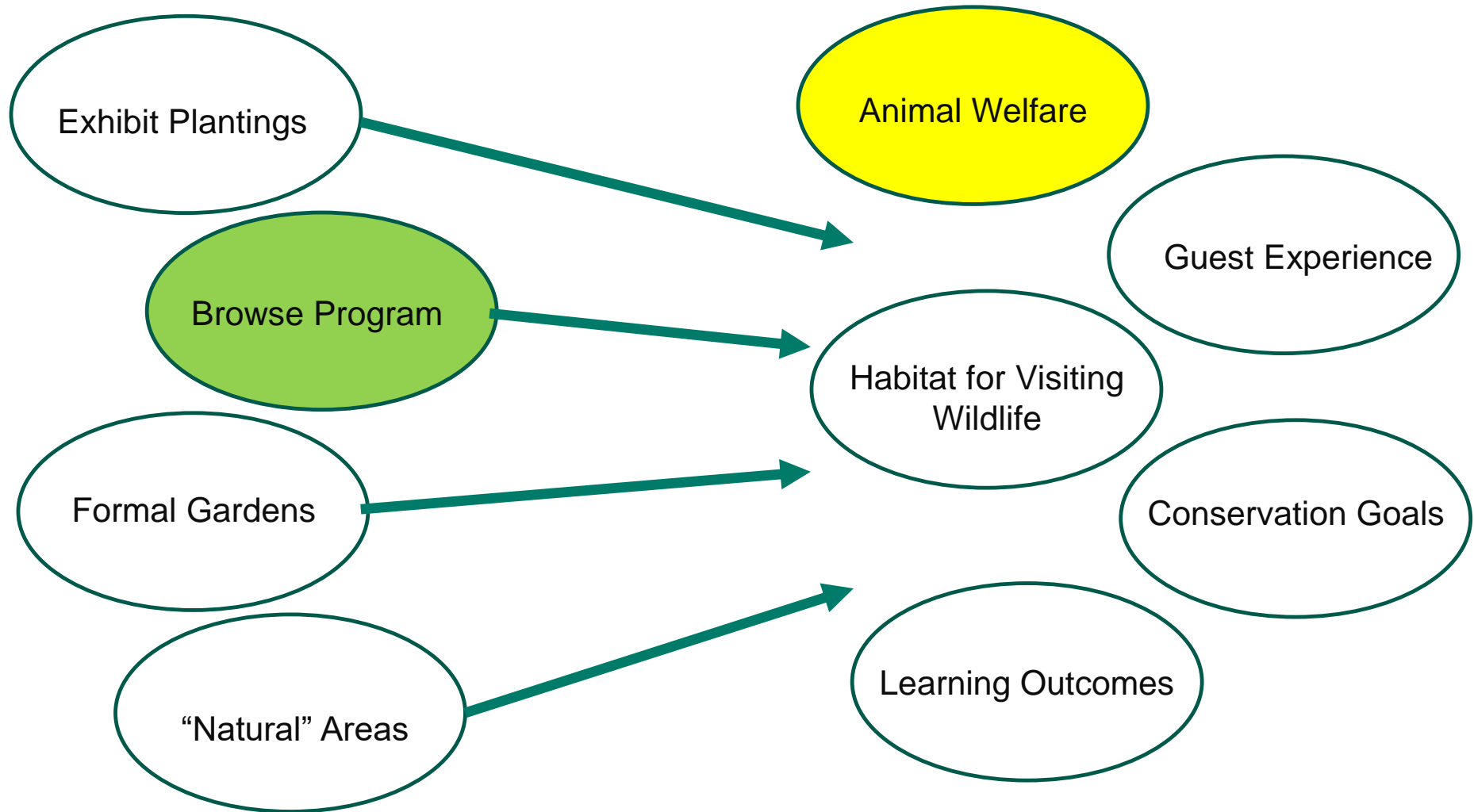
Finding a Solution



Finding a Solution – A Cultural Shift



Other Collaborative Benefits



New Collaborations



New Collaborations

Post Harvest Storage of Bamboo (Nutrition Center)



New Collaborations

Browse Prescribed in Gorilla Diet (Nutrition Center)



New Collaborations

Discussion on Pest Management



Continued Collaborations (Operations – Events)



Continued Collaborations (Operations – Events)





**CULTIVATE YOUR CREATIVE
NATURE**